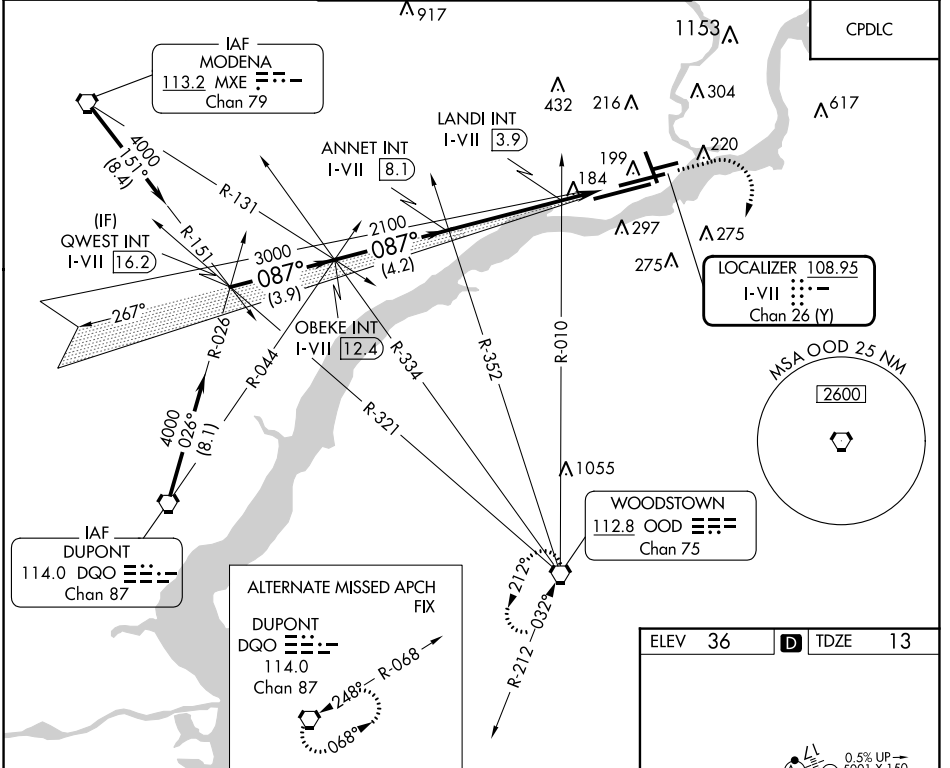


LOC/DME I-VII <b>108.95</b> Chan 26 (Y)	APP CRS <b>087°</b>	Rwy Idg TDZE Apt Elev	<b>9500</b> <b>13</b> <b>36</b>
---	------------------------	-----------------------------	---------------------------------------

# ILS RWY 9L ( SA CAT II )

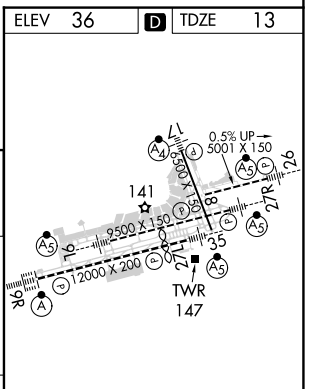
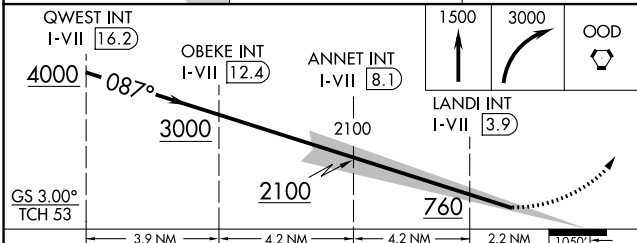
PHILADELPHIA INTL (PHL)

Requires specific OPSPEC, MSPEC, or LOA approval.		MALSR 	MISSED APPROACH: Climb to 1500 then climbing right turn to 3000 direct OOD VORTAC and hold.		
D-ATIS ARR <b>133.4</b> DEP <b>135.925</b>	PHILADELPHIA APP CON <b>124.35 319.15</b>	PHILADELPHIA TOWER <b>118.5 327.05</b> (Rwys 9L/27R, 8/26 and 17/35) <b>135.1 327.05</b> (Rwy 9R/27L)		GND CON <b>121.9 348.6</b>	CLNC DEL <b>118.85 348.6</b>



NE-4, 28 NOV 2024 to 26 DEC 2024

NE-4, 28 NOV 2024 to 26 DEC 2024



CATEGORY	A	B	C	D
S-ILS 9L	RA 093/12 100 DA 113			
<b>SA CATEGORY II ILS - SPECIAL AIRCREW &amp; AIRCRAFT CERTIFICATION REQUIRED</b>				

TDZ/CL Rwy 9R  
HIRL all Rwys  
REIL Rwys 9L and 35