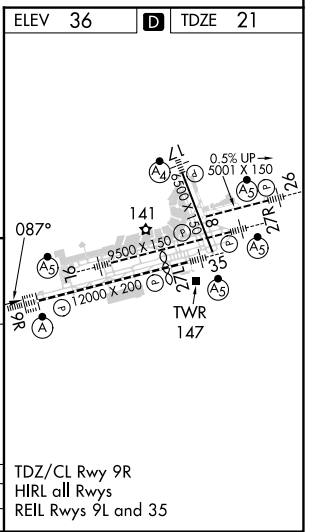
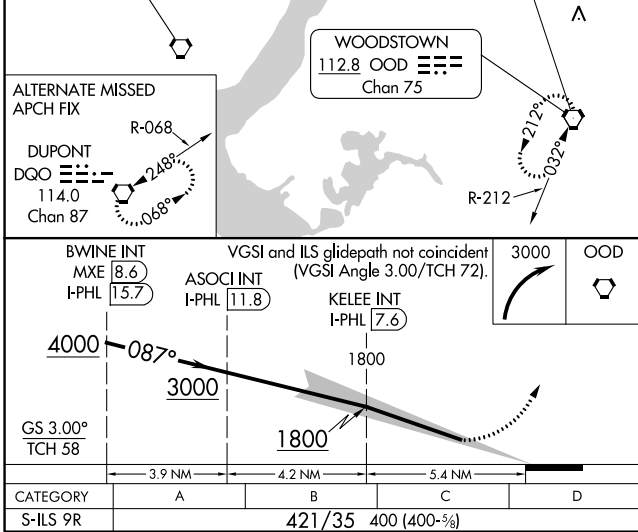
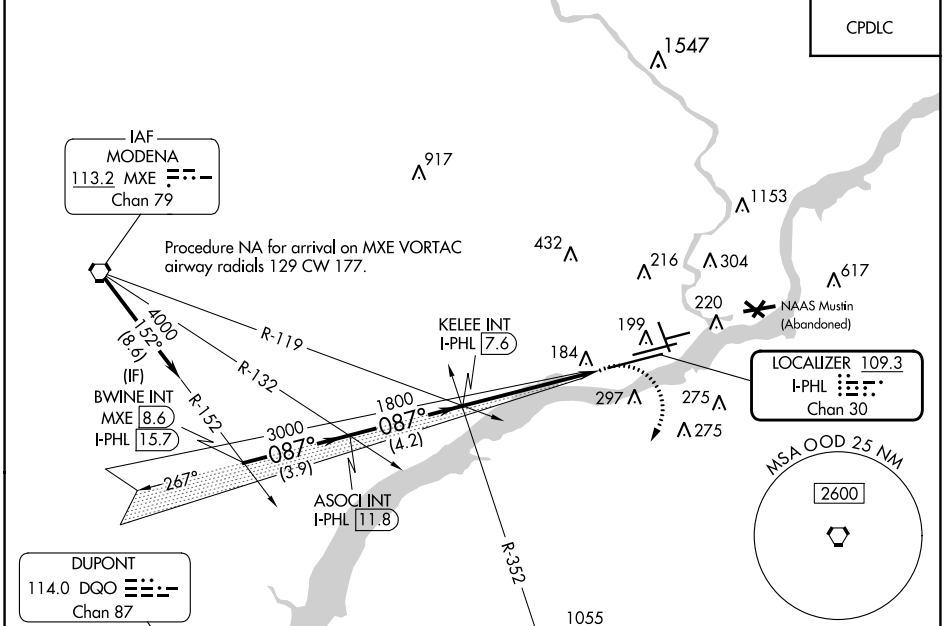


LOC/DME I- PHL	APP CRS	Rwy Idg	12000
109.3	087°	TDZE	21
Chan 30		Apt Elev	36

ILS V RWY 9R (CONVERGING)

PHILADELPHIA INTL (PHL)

RADAR required.		ALSIF-2	MISSED APPROACH: Climbing right turn to 3000 direct OOD VORTAC and hold.		
<p>Simultaneous approach authorized. For inop ALS, increase S-ILS 9R all Cats visibility to RVR 6000.</p>					
D-ATIS	PHILADELPHIA APP CON	PHILADELPHIA TOWER		GND CON	CLNC DEL
ARR 133.4	124.35 319.15	118.5 327.05 (Rwys 9L/27R, 8/26 and 17/35)		121.9 348.6	118.85 348.6
DEP 135.925		135.1 327.05 (Rwy 9R/27L)			



NE-4, 28 NOV 2024 to 26 DEC 2024

NE-4, 28 NOV 2024 to 26 DEC 2024