

APP CRS	Rwy Idg	12000
087°	TDZE	21
	Apt Elev	36

RNAV (RNP) Z RWY 9R

PHILADELPHIA INTL (PHL)

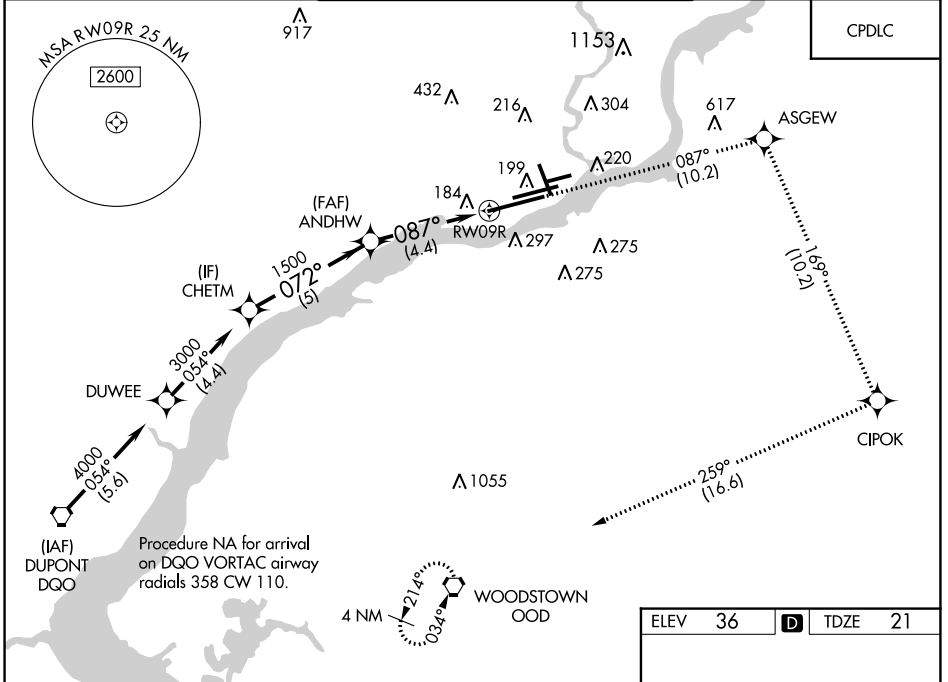
RNP AR APCH - GPS.

▼ For uncompensated Baro-VNAV systems, procedure NA below -12°C or above 54°C. For inop ALS, increase RNP 0.16 all Cats visibility to RVR 4500 and RNP 0.30 all Cats visibility to 1½ SM.

ALSIF-2

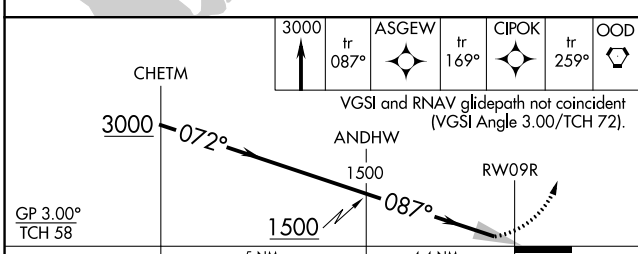
MISSED APPROACH: Climb to 3000 on track 087° to ASGEW and on track 169° to CIPOK, and on track 259° to OOD VORTAC and hold.

D-ATIS	PHILADELPHIA APP CON	PHILADELPHIA TOWER	GND CON	CLNC DEL
ARR 133.4	124.35 319.15	(Rwys 9L/27R, 8/26 and 17/35)	121.9 348.6	118.85 348.6
DEP 135.925		135.1 327.05 (Rwy 9R/27L)		



NE-4, 28 NOV 2024 to 26 DEC 2024

NE-4, 28 NOV 2024 to 26 DEC 2024



CATEGORY	A	B	C	D
RNP 0.16 DA		424/40	403 (400-¾)	
RNP 0.30 DA		461/50	440 (500-1)	

ELEV	36	D	TDZE	21
------	----	---	------	----

Diagram details:

- TWR 147** at 147 ft.
- Runway 9R** with width 2000 x 200 ft.
- Runway 9L** with width 2500 x 150 ft.
- Runway 27R** with width 2000 x 200 ft.
- Runway 27L** with width 2000 x 200 ft.
- Obstacles**: 141, 171, 172, 173, 174, 175, 176, 177, 178, 179, 180, 181, 182, 183, 184, 185, 186, 187, 188, 189, 190, 191, 192, 193, 194, 195, 196, 197, 198, 199, 200, 201, 202, 203, 204, 205, 206, 207, 208, 209, 210, 211, 212, 213, 214, 215, 216, 217, 218, 219, 220, 221, 222, 223, 224, 225, 226, 227, 228, 229, 230, 231, 232, 233, 234, 235, 236, 237, 238, 239, 240, 241, 242, 243, 244, 245, 246, 247, 248, 249, 250, 251, 252, 253, 254, 255, 256, 257, 258, 259, 260, 261, 262, 263, 264, 265, 266, 267, 268, 269, 270, 271, 272, 273, 274, 275, 276, 277, 278, 279, 280, 281, 282, 283, 284, 285, 286, 287, 288, 289, 290, 291, 292, 293, 294, 295, 296, 297, 298, 299, 300.

TDZ/CL Rwy 9R
HIRL all Rwys
REIL Rwys 9L and 35