

WAAS CH <b>45523</b> <b>W09B</b>	APP CRS <b>087°</b>	Rwy Idg TDZE <b>13</b> Apt Elev <b>36</b>	<b>9500</b>
--	------------------------	---	-------------

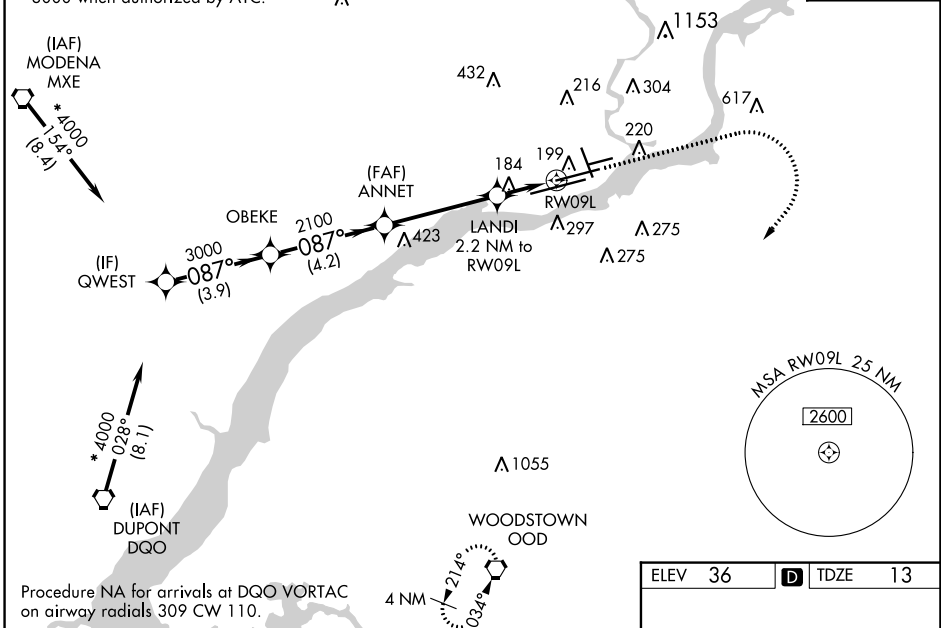
# RNAV (GPS) Y RWY 9L

PHILADELPHIA INTL (PHL)

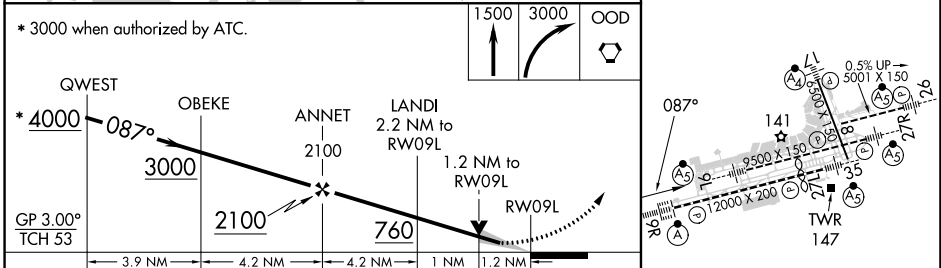
RNP APCH - GPS.		MALSR	MISSED APPROACH: Climb to 1500, then climbing right turn to 3000 direct OOD VORTAC and hold.
▼ For uncompensated Baro-VNAV systems, LNAV/VNAV NA below -12°C or above 54°C. For inop ALS, increase LNAV/VNAV visibility to RVR 4500, all Cats. # RVR 1800 authorized with use of FD or AP or HUD to DA.			
D-ATIS ARR <b>133.4</b> DEP <b>135.925</b>	PHILADELPHIA APP CON <b>124.35 319.15</b>	PHILADELPHIA TOWER <b>118.5 327.05</b> (Rwys 9L/27R, 8/26 and 17/35) <b>135.1 327.05</b> (Rwy 9R/27L)	GND CON <b>121.9 348.6</b> CLNC DEL <b>118.85 348.6</b>

Procedure NA for arrivals at MXE VORTAC on airway radials 129 CW 177.  
\* 3000 when authorized by ATC.

CPDLC



Procedure NA for arrivals at DQO VORTAC on airway radials 309 CW 110.



ELEV 36	TDZE 13
GP 3.00° TCH 53	
CATEGORY	A B C D
LPV DA #	213/24 200 (200-½)
LNAV/VNAV DA	325/24 312 (300-½)
LNAV MDA	440/24 427 (500-½) 440/40 427 (500-¾)
CIRCLING	540-1 600-1 620-1½ 720-2¼ 504 (600-1) 564 (600-1) 584 (600-1½) 684 (700-2¼)

TDZ/CL Rwy 9R  
HIRL all Rwys  
REIL Rwys 9L and 35

NE-4, 28 NOV 2024 to 26 DEC 2024

NE-4, 28 NOV 2024 to 26 DEC 2024