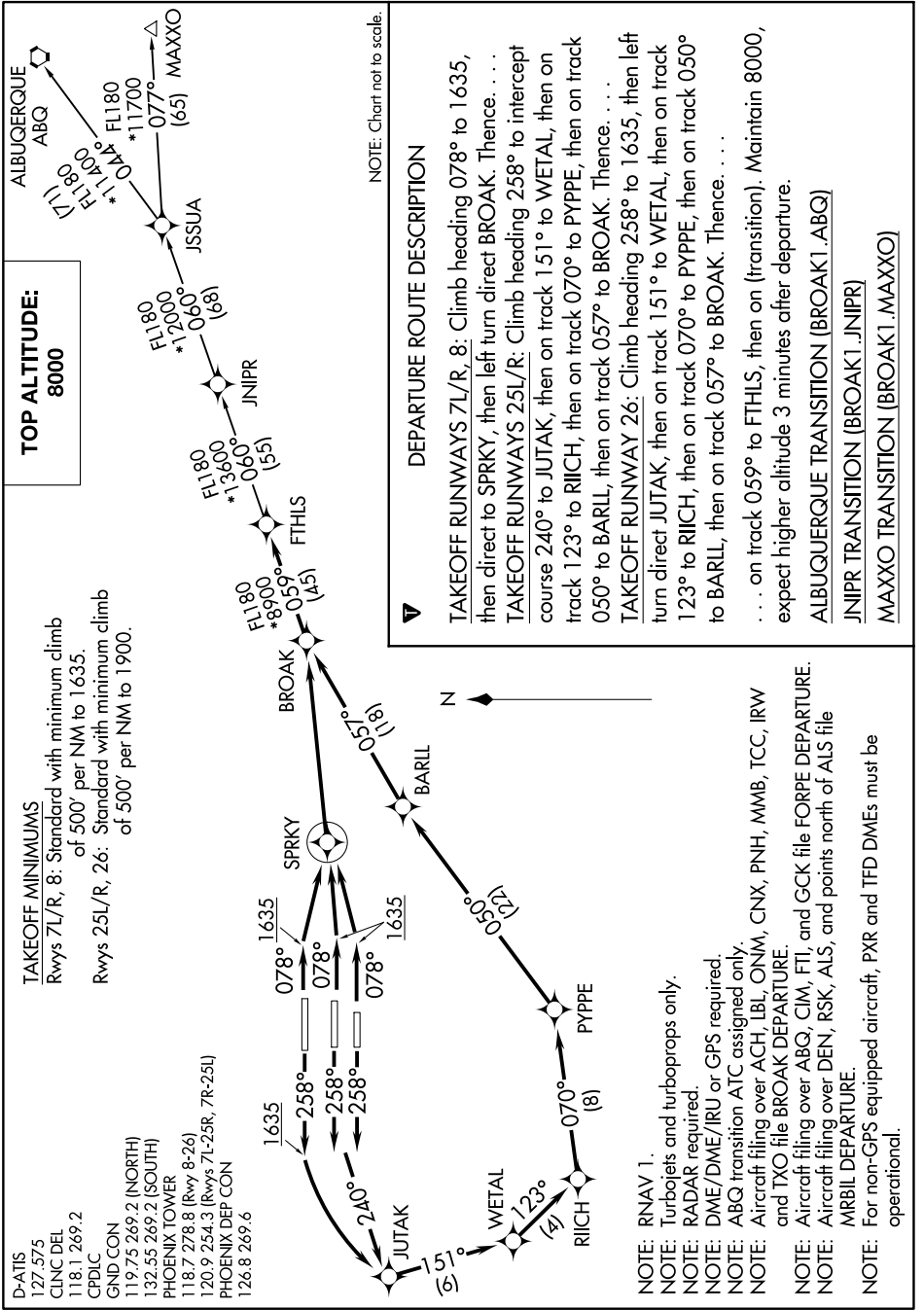


SW-4, 28 NOV 2024 to 26 DEC 2024



TAKEOFF MINIMUMS
 Rwy 7L/R, 8: Standard with minimum climb of 500' per NM to 1635.
 Rwy 25L/R, 26: Standard with minimum climb of 500' per NM to 1900.

D-ATIS 127.575
 CLNC DEL 118.1 269.2
 CPDLC
 GND CON 119.75 269.2 (NORTH)
 132.55 269.2 (SOUTH)
 PHOENIX TOWER 118.7 278.8 (Rwy 8-26)
 120.9 254.3 (Rwys 7L-25R, 7R-25L)
 PHOENIX DEP CON 126.8 269.6

SW-4, 28 NOV 2024 to 26 DEC 2024