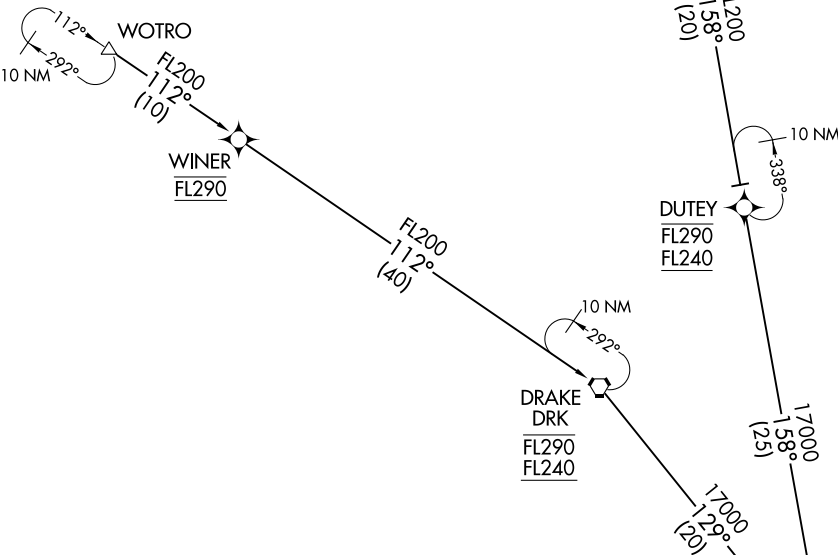


BRUSR ONE ARRIVAL (RNAV) Transition Routes

PHOENIX APP CON
128.65 353.9
PHOENIX TOWER
118.7 278.8 (Rwy 8-26)
120.9 254.3 (Rwy 7L-25R, 7R-25L)
GND CON
119.75 269.2 (North)
132.55 269.2 (South)
D-ATIS
127.575

- NOTE: RADAR required.
- NOTE: RNAV 1.
- NOTE: DME/DME/IRU or GPS required.
- NOTE: Turbojet aircraft only.
- NOTE: All Transitions: For non-GPS equipped aircraft landing east:
TFD, BXK, and IWA DMEs must be operational.
- NOTE: TENTS Transition: For non-GPS equipped aircraft landing west:
PXR and IWA DMEs must be operational.



(CONTINUED ON FOLLOWING PAGE)

NOTE: Chart not to scale.

TENTS TRANSITION (TENTS.BRUSR1)
WOTRO TRANSITION (WOTRO.BRUSR1)

MAIER
FL250 270K
FL190
See following page
for Arrival Routes.

BRUSR ONE ARRIVAL (RNAV) Transition Routes

SW-4, 28 NOV 2024 to 26 DEC 2024

SW-4, 28 NOV 2024 to 26 DEC 2024