

# BUCKEYE FOUR DEPARTURE

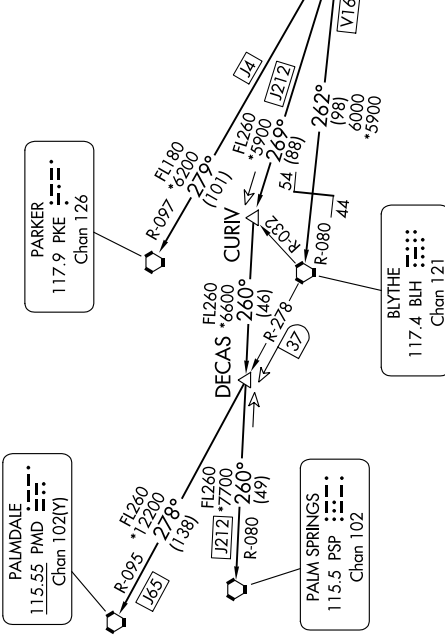
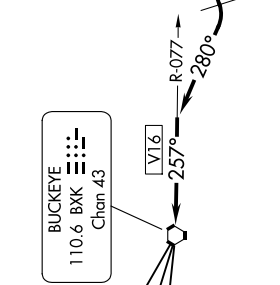
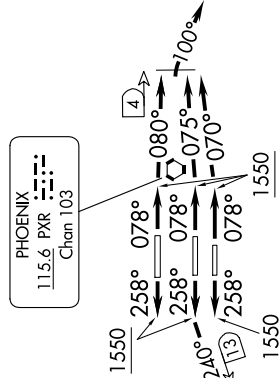
AL-322 (FAA)

PHOENIX SKY HARBOR INTL (PHX)  
PHOENIX, ARIZONA

SW-4, 28 NOV 2024 to 26 DEC 2024

**TOP ALTITUDE:**  
8000

PHOENIX DEP CON  
126.8 269.6  
D-ATIS  
127.575  
CLNC DEL  
118.1 269.2  
CPDIC  
GND CON  
119.75 269.2 (NORTH)  
132.55 269.2 (SOUTH)  
PHOENIX TOWER  
118.7 278.8 (Rwy 8-26)  
120.9 254.3 (Rwys 7L-25R, 7R-25L)



### TAKEOFF MINIMUMS

Rwys 7L/7R/8: Standard with minimum climb of 300' per NM to 8000.  
Rwys 25L/25R/26: Standard with minimum climb of 350' per NM to 8000.

NOTE: Restricted to turbojet and turboprop aircraft only.

NOTE: RADAR and DME required.

NOTE: Aircraft requesting FL 220 and below must file BLYTHE Transition.

NOTE: Turbojets landing LAX, file PARKER Transition.

NOTE: Aircraft landing other than LAX and turboprops landing at LAX:  
Requesting FL240 and above, file PALMDALE or PALM SPRINGS Transition.

NOTE: Chart not to scale.

(CONTINUED ON FOLLOWING PAGE)

SW-4, 28 NOV 2024 to 26 DEC 2024

# BUCKEYE FOUR DEPARTURE

PHOENIX, ARIZONA  
PHOENIX SKY HARBOR INTL (PHX)