

(JESSE.JESSE3) 23334

JESSE THREE ARRIVAL

AL-322 (FAA)

PHOENIX SKY HARBOR INTL (PHX)
PHOENIX, ARIZONA

PHOENIX APP CON
128.65 353.9
PHOENIX TOWER
118.7 278.8 (Rwy 8-26)
120.9 254.3 (Rwy 7L-25R, 7R-25L)
GND CON
119.75 269.2
D-ATIS
127.575

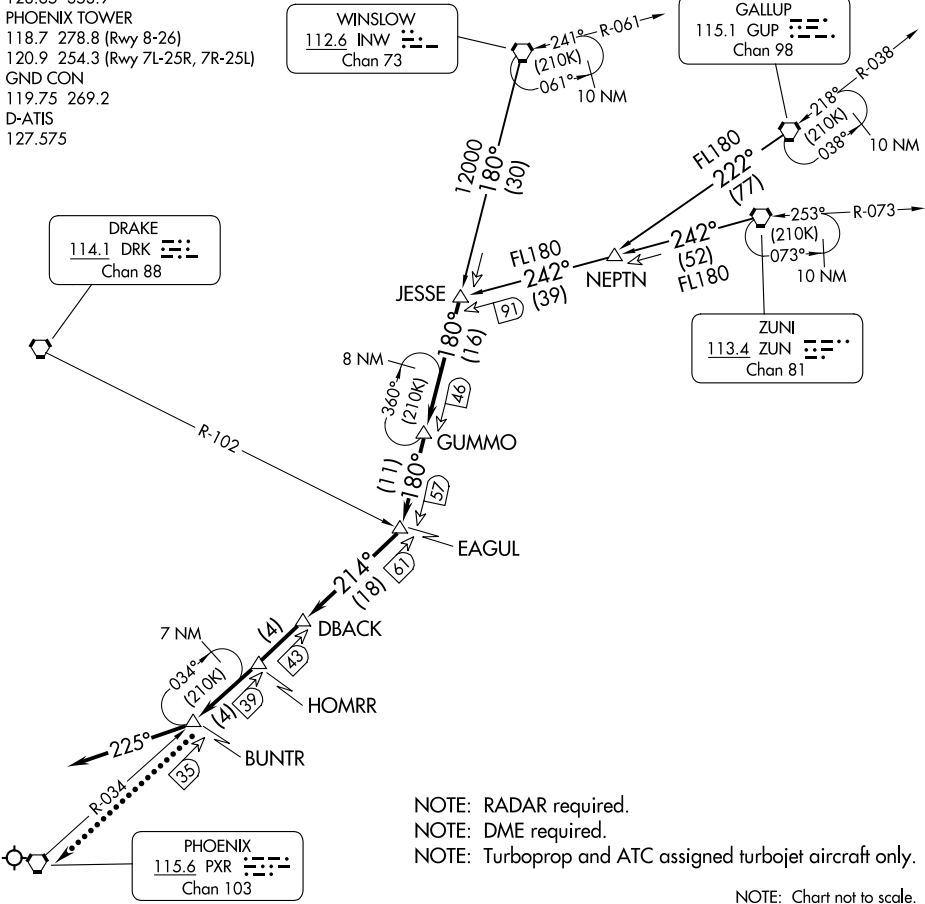
WINSLOW
112.6 INW
Chan 73

GALLUP
115.1 GUP
Chan 98

DRAKE
114.1 DRK
Chan 88

ZUNI
113.4 ZUN
Chan 81

PHOENIX
115.6 PXR
Chan 103



NOTE: RADAR required.
 NOTE: DME required.
 NOTE: Turboprop and ATC assigned turbojet aircraft only.

NOTE: Chart not to scale.

ARRIVAL ROUTE DESCRIPTION

GALLUP TRANSITION (GUP.JESSE3): From over GUP VORTAC on GUP R-222 and ZUN R-242 to JESSE. Thence. . .

WINSLOW TRANSITION (INW.JESSE3): From over INW VORTAC on INW R-180 to JESSE. Thence. . .

ZUNI TRANSITION (ZUN.JESSE3): From over ZUN VORTAC on ZUN R-242 to JESSE. Thence. . .

. . . From over JESSE on INW R-180 to GUMMO, then on INW R-180 to EAGUL, then on PXR R-034 to DBACK, then on PXR R-034 to HOMRR, then on PXR R-034 to BUNTR, after BUNTR fly heading 225°, expect RADAR vectors to final approach course.

LOST COMMUNICATIONS

After BUNTR, proceed direct to PXR VORTAC.

JESSE THREE ARRIVAL

(JESSE.JESSE3) 02DEC21

PHOENIX, ARIZONA
PHOENIX SKY HARBOR INTL (PHX)

SW-4, 28 NOV 2024 to 26 DEC 2024

SW-4, 28 NOV 2024 to 26 DEC 2024