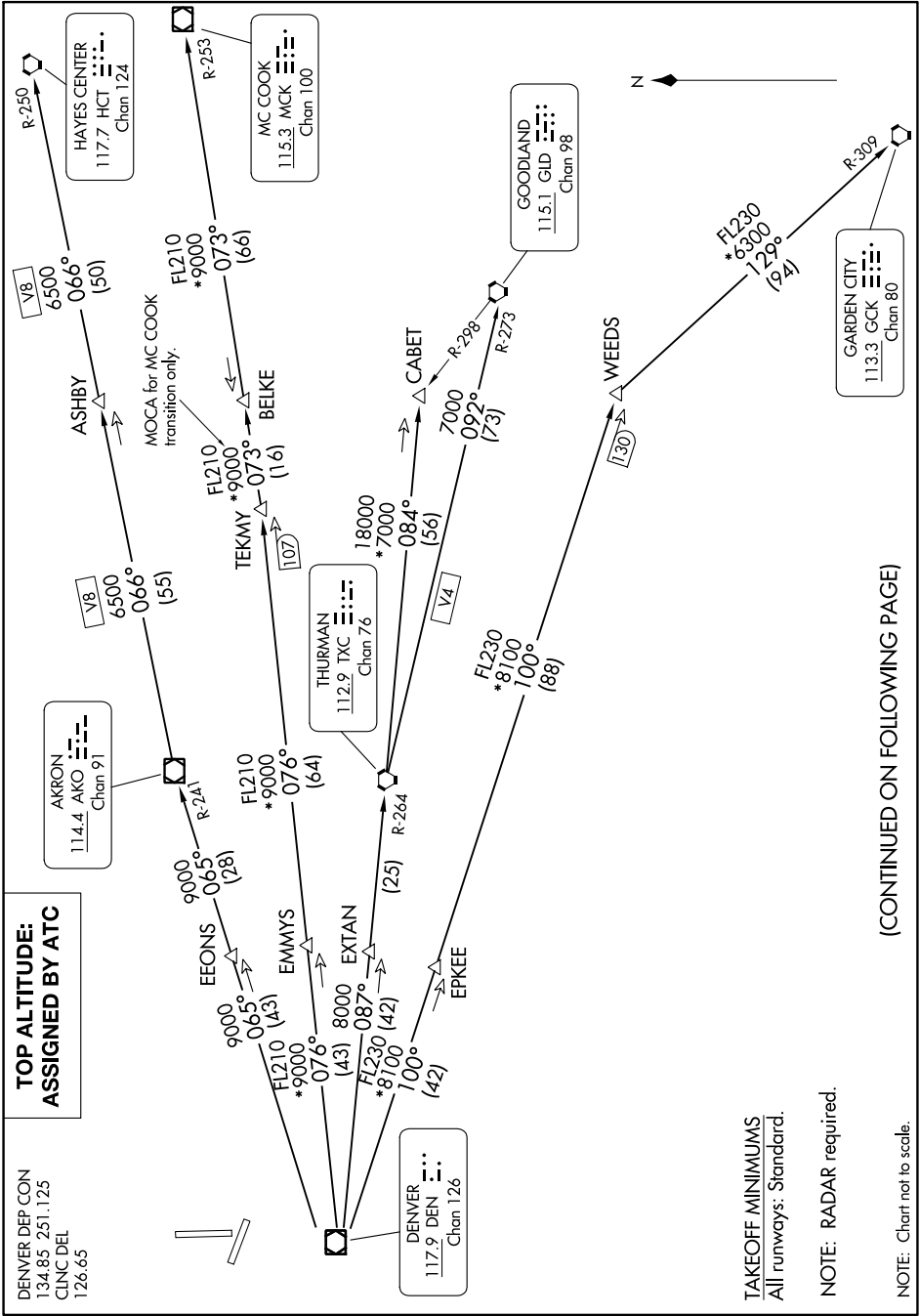


# PLAINS ONE DEPARTURE

AL-325 (FAA)

GREELEY-WELD COUNTY (GXXY)  
GREELEY, COLORADO

SW-1, 28 NOV 2024 to 26 DEC 2024



(CONTINUED ON FOLLOWING PAGE)

SW-1, 28 NOV 2024 to 26 DEC 2024

# PLAINS ONE DEPARTURE

GREELEY, COLORADO  
GREELEY-WELD COUNTY (GXXY)