

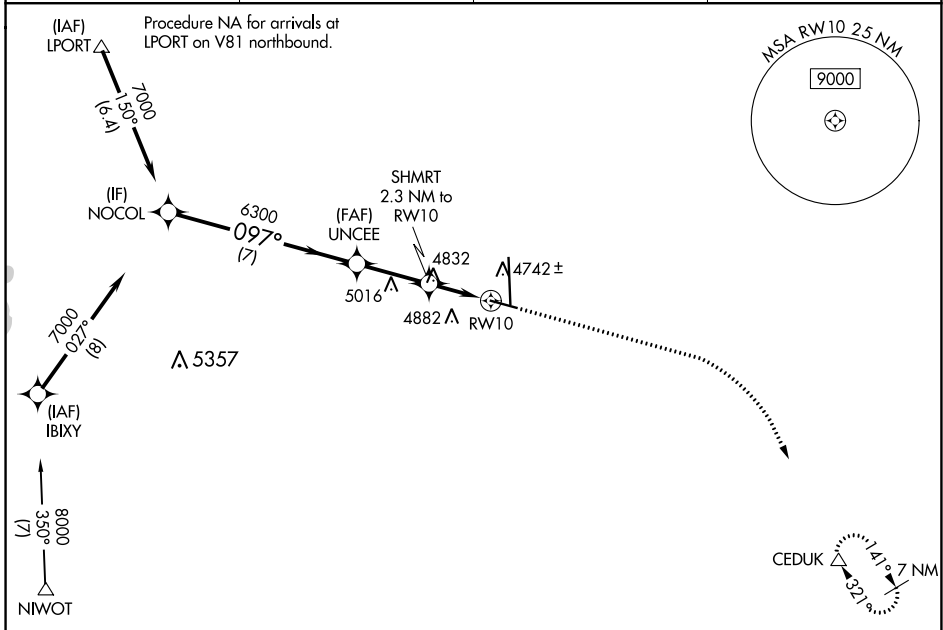
WAAS CH <b>62900</b> <b>W10A</b>	APP CRS <b>097°</b>	Rwy Idg TDZE Apt Elev	<b>5801</b> <b>4661</b> <b>4697</b>
----------------------------------------	------------------------	-----------------------------	-------------------------------------------

# RNAV (GPS) RWY 10

GREELEY-WELD COUNTY (GXY)

RNP APCH.	MISSED APPROACH: Climb to 5400 then climbing right turn to 7000 direct CEDUK and hold.
<p><b>▽</b> For uncompensated Baro-VNAV systems, LNAV/VNAV NA below -24°C or above 54°C.</p> <p><b>△</b></p>	

AWOS-3PT <b>135.175</b>	DENVER APP CON <b>134.85 251.125</b>	CLNC DEL <b>126.65</b>	UNICOM <b>122.7 (CTAF) 0</b>
----------------------------	-----------------------------------------	---------------------------	---------------------------------



SW-1, 28 NOV 2024 to 26 DEC 2024

SW-1, 28 NOV 2024 to 26 DEC 2024

VGSi and RNAV glidepath not coincident NOCOL (VGSi Angle 3.00/TCH 43).				
7000 097° UNCEE 6300 *5440 SHMRT 2.3 NM to RW10 *1.4 NM to RW10 RW10 *LNAV only				
CATEGORY	A	B	C	D
LPV DA		4911-3/4	250 (300-3/4)	
LNAV/VNAV DA		4920-3/4	259 (300-3/4)	
LNAV MDA	5140-1	479 (500-1)	5140-13/8	479 (500-13/8)
<b>CIRCLING</b>	5140-1 443 (500-1)	5200-1 503 (600-1)	5200-1 1/2 503 (600-1 1/2)	5380-2 1/4 683 (700-2 1/4)

