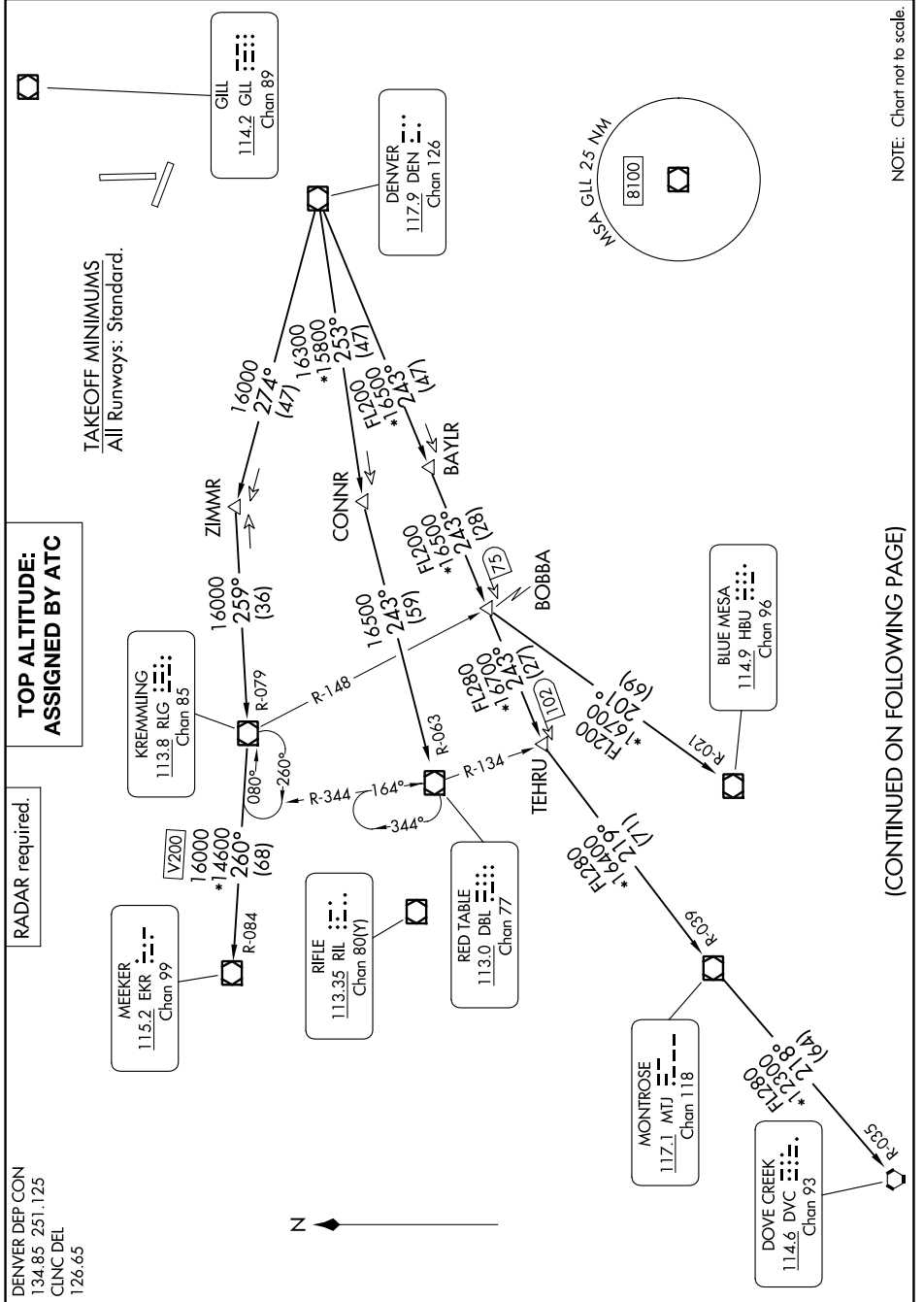


# ROCKIES SIX DEPARTURE

AL-325 (FAA)

GREELEY-WELD COUNTY (GXY)  
GREELEY, COLORADO

SW-1, 28 NOV 2024 to 26 DEC 2024



NOTE: Chart not to scale.

(CONTINUED ON FOLLOWING PAGE)

SW-1, 28 NOV 2024 to 26 DEC 2024

# ROCKIES SIX DEPARTURE

GREELEY, COLORADO  
GREELEY-WELD COUNTY (GXY)