

| | | |
|-------------|----------|-------------|
| APP CRS | Rwy Idg | 8700 |
| 227° | TDZE | 50 |
| | Apt Elev | 55 |

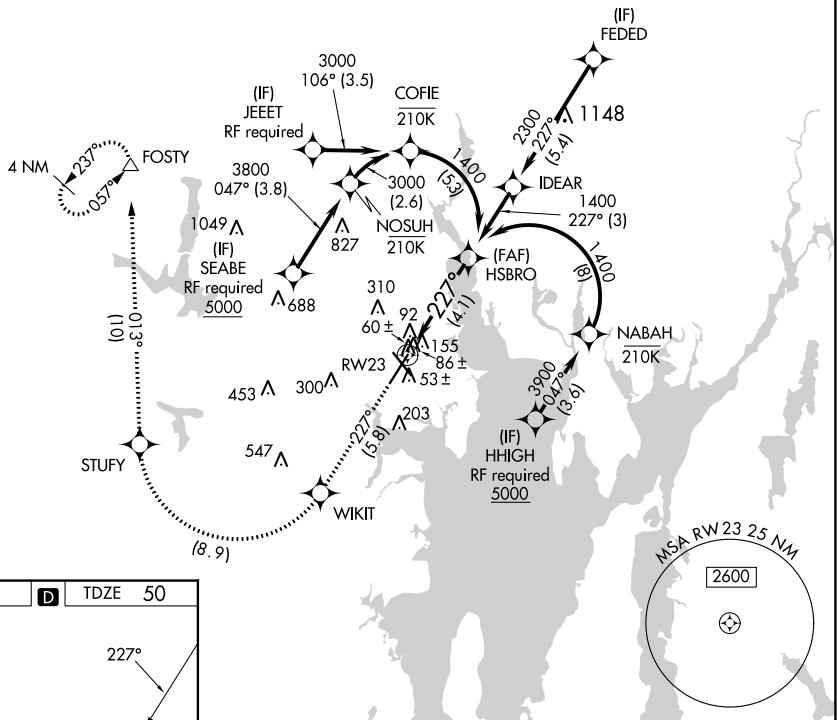
RNAV (RNP) Z RWY 23

RHODE ISLAND TF GREEN INTL (PVD)

| | | |
|--|--------------|--|
| <p>▼ For uncompensated Baro-VNAV systems, procedure NA below -15°C (5°F) or above 48°C (118°F). RF required. For inop MALSR, increase RNP 0.30 all Cats visibility to 1¼. GPS Required.</p> | <p>MALSR</p> | <p>Climb to 2500 on track 227° to WIKIT and right turn to STUFY and on track 013° to FOSTY and hold.</p> |
|--|--------------|--|

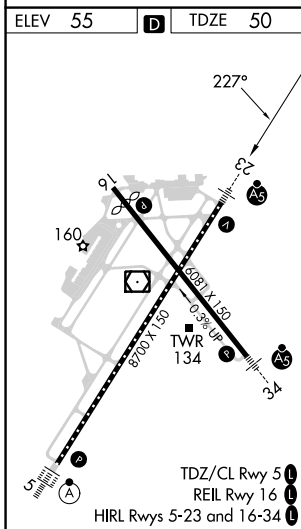
| | | | | |
|--------------|------------------------|---------------------------|--------------------|---------------------|
| D-ATIS | PROVIDENCE APP CON * | PROVIDENCE TOWER * | GND CON | CLNC DEL |
| 124.2 | 123.675 244.875 | 120.7 (CTAF) 257.8 | 121.9 348.6 | 126.65 348.6 |

RADAR REQUIRED



NE-1, 28 NOV 2024 to 26 DEC 2024

NE-1, 28 NOV 2024 to 26 DEC 2024



| | | | | | |
|---------|-------|-------|---------|-------|-------|
| 2500 | WIKIT | STUFY | tr 013° | FOSTY | HSBRO |
| tr 227° | | | | | 1400 |

VGSI and RNAV glidepath not coincident (VGSI Angle 3.00/TCH 41).

See planview for multiple IF locations.

GP 3.00° TCH 5T

| | | | | |
|-------------|--------------------|---|---|---|
| CATEGORY | A | B | C | D |
| RNP 0.30 DA | 434/40 384 (400-¾) | | | |

AUTHORIZATION REQUIRED