

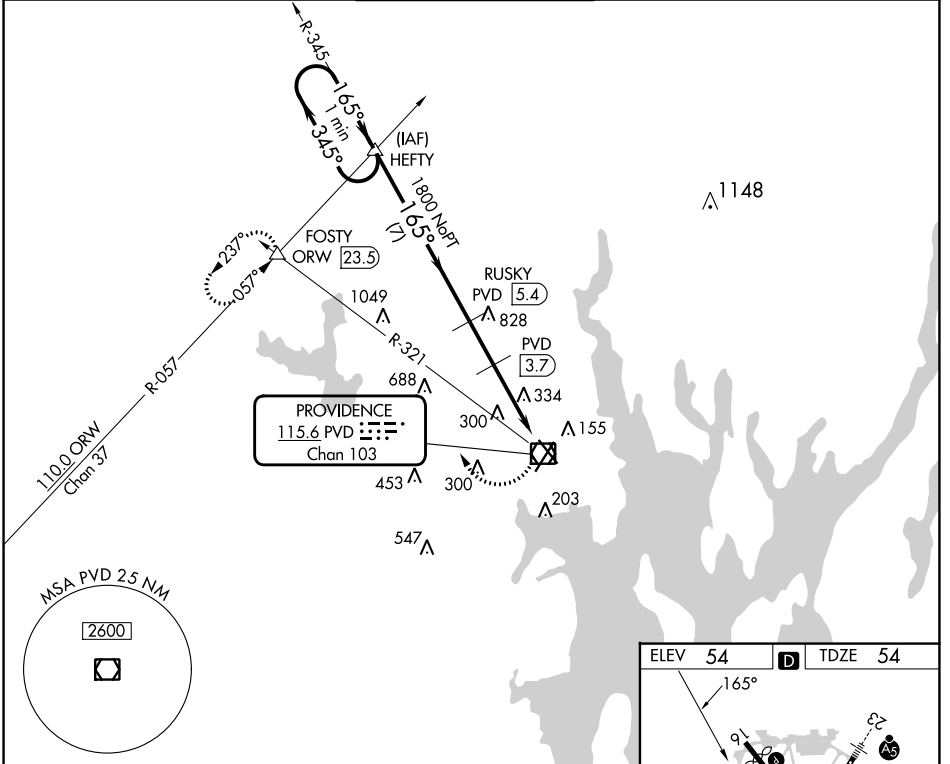
VOR/DME PVD <b>115.6</b> Chan <b>103</b>	APP CRS <b>165°</b>	Rwy Idg TDZE Apt Elev	<b>5516</b> <b>54</b> <b>54</b>
--	------------------------	-----------------------------	---------------------------------------

# VOR/DME RWY 16

RHODE ISLAND TF GREEN INTL (PVD)

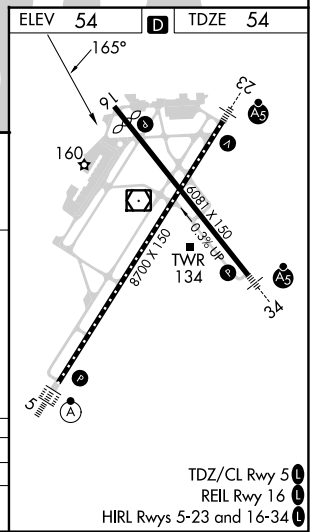
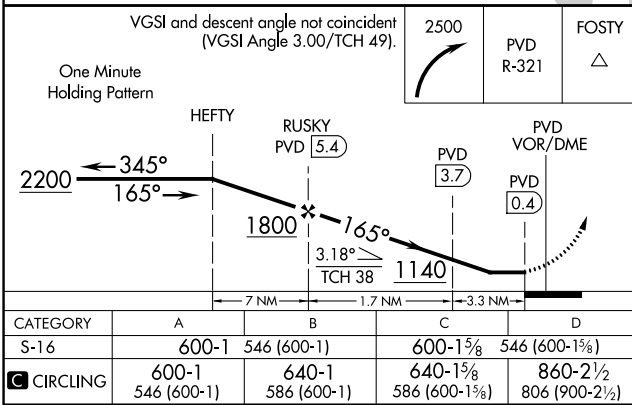
**▼** Rwy 16 helicopter visibility reduction below 3/4 SM NA.  
**▲** MISSED APPROACH: Climbing right turn to 2500 via PVD R-321 to FOSTY INT and hold.

D-ATIS <b>124.2</b>	PROVIDENCE APP CON * <b>123.675 244.875</b>	PROVIDENCE TOWER * <b>120.7</b> (CTAF) <b>0 257.8</b>	GND CON <b>121.9 348.6</b>	CLNC DEL <b>126.65 348.6</b>
------------------------	--	--	-------------------------------	---------------------------------



NE-1, 28 NOV 2024 to 26 DEC 2024

NE-1, 28 NOV 2024 to 26 DEC 2024



CATEGORY	A	B	C	D
S-16	600-1	546 (600-1)	600-1 1/2	546 (600-1 1/2)
<b>CIRCLING</b>	600-1 546 (600-1)	640-1 586 (600-1)	640-1 1/2 586 (600-1 1/2)	860-2 1/2 806 (900-2 1/2)

TDZ/CL Rwy 5 **0**  
 REIL Rwy 16 **0**  
 HIRL Rws 5-23 and 16-34 **0**