


| | | |
|--|------------------------|--|
| VOR/DME PVD 115.6 Chan 103 | APP CRS 326° | Rwy Idg TDZE Apt Elev 6081 50 54 |
|--|------------------------|--|

VOR Z RWY 34

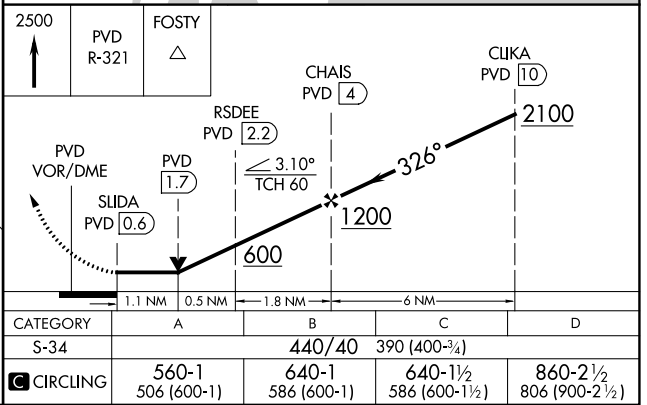
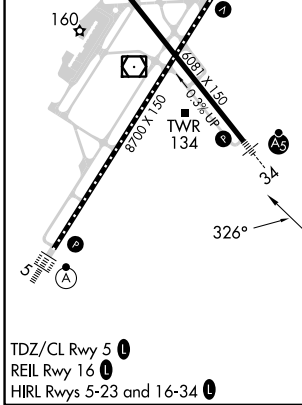
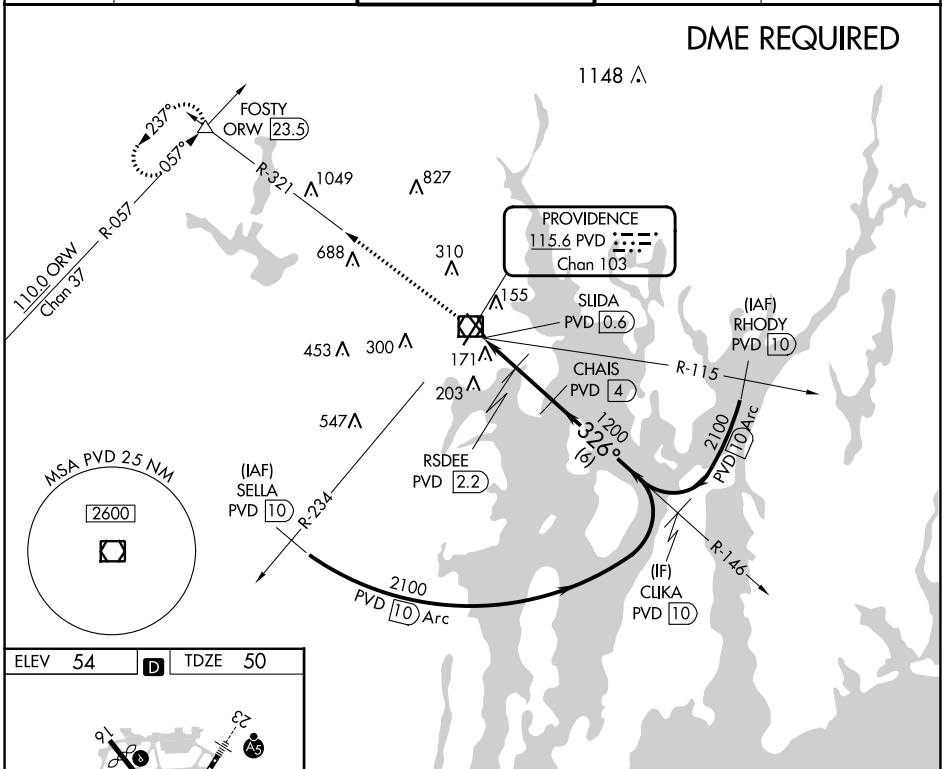
RHODE ISLAND TF GREEN INTL (PVD)

⚠ Rwy 34 helicopter visibility reduction below RVR 4000 NA.
⚠ DME required. For inop ALS, increase Cat A/B visibility to RVR 5500, and Cat C/D to RVR 6000.

MALSR 

MISSED APPROACH: Climb to 2500 on PVD VOR/DME R-321 to FOSTY INT/ ORW 23.5 DME and hold.

| | | | | |
|------------------------|--|--|-------------------------------|---------------------------------|
| D-ATIS 124.2 | PROVIDENCE APP CON * 123.675 244.875 | PROVIDENCE TOWER * 120.7 (CTAF) 0 257.8 | GND CON 121.9 348.6 | CLNC DEL 126.65 348.6 |
|------------------------|--|--|-------------------------------|---------------------------------|



NE-1, 28 NOV 2024 to 26 DEC 2024

NE-1, 28 NOV 2024 to 26 DEC 2024