

LOC/DME I-RNO	APP CRS	Rwy Idg	17R	17L
<b>110.9</b>	<b>167°</b>	TDZE	<b>10001 4415</b>	<b>9000 4415</b>
Chan <b>46</b>		Apt Elev	<b>4415 4415</b>	<b>4415</b>

# LOC Y RWY 17R

RENO/TAHOE INTL (RNO)

DME required.

**⚠** Circling Rwy 8 NA at night. For inop ALS, increase S-LOC 17R\* Cat E visibility to 3 SM. Circling NA for Cat E southwest **35**-13°C of Rwy 8 and 35L.

# Inop table does not apply to Cats C, D and E.

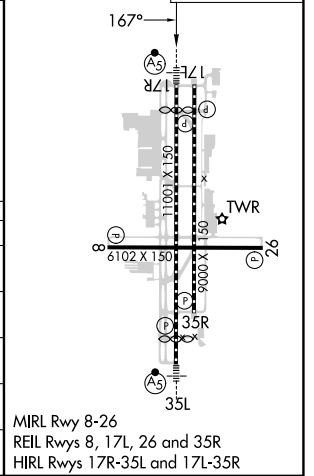
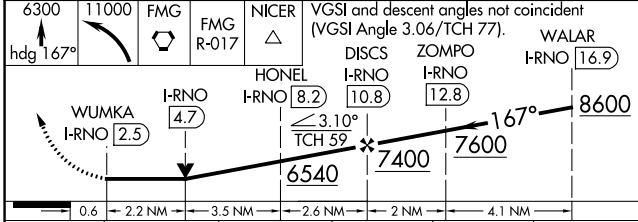
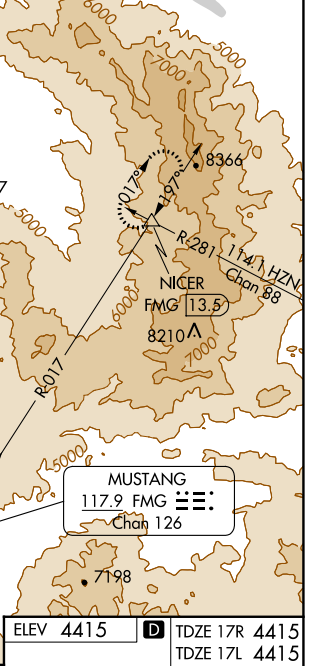
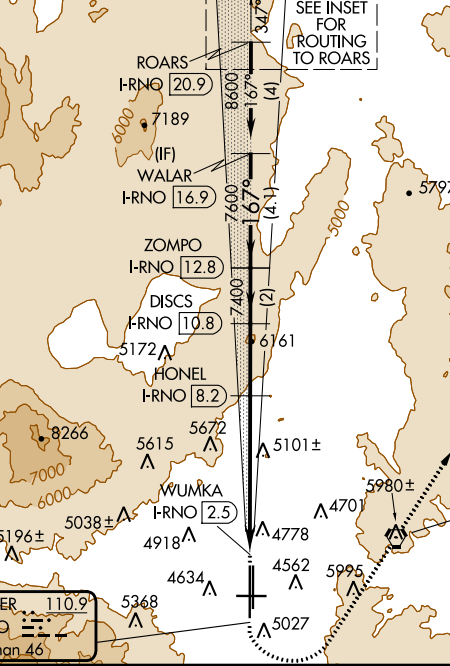
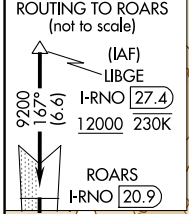
**MALSR 17R**

**MISSED APPROACH:** Climb to 6300 on heading 167° then climbing left turn 11000 direct FMG VORTAC and on FMG VORTAC R-017 to NICER INT and hold, continue climb-in-hold to 11000.

\*Missed approach requires minimum climb of 320 feet per NM to 8000.

†Missed approach requires minimum climb of 260 feet per NM to 8000.

D-ATIS	NORCAL APP CON	RENO TOWER	GND CON	CLNC DEL	CPDLC
<b>135.8 363.0</b>	<b>119.2 279.55 126.3 353.9</b>	<b>118.7 257.8</b>	<b>121.9 348.6</b>	<b>124.9 370.85</b>	



CATEGORY	A	B	C	D	E
S-LOC 17R*	5420/40 1005 (1100-3/4)	5420/55 1005 (1100-1)	5420-2 1/2	1005 (1100-2 1/2)	
SIDESTEP 17L*#	5420-1 1/4 1005 (1100-1 1/4)	5420-1 1/2 1005 (1100-1 1/2)	5420-3	1005 (1100-3)	
S-LOC 17RT#	5720/40 1305 (1400-3/4)	5720/55 1305 (1400-1)	5720-3	1305 (1400-3)	
S-LOC 17R#	5920/40 1505 (1600-3/4)	5920/55 1505 (1600-1)	5920-3	1505 (1600-3)	6180-3 1765 (1800-3)
<b>C</b> CIRCLING	5920-1 1/4 1505 (1600-1 1/4)	5920-1 1/2 1505 (1600-1 1/2)	6480-3	2065 (2100-3)	6700-3 2285 (2300-3)

SW-4, 28 NOV 2024 to 26 DEC 2024

SW-4, 28 NOV 2024 to 26 DEC 2024