

# RENO ONE DEPARTURE

AL-346 (FAA)

RENO/TAHOE INTL (RNO)

RENO, NEVADA

### TAKEOFF MINIMUMS

RADAR required.

**TOP ALTITUDE:  
FL190**

D-ATIS	135.8	363.0
CLNC DEL	124.9	370.85
CPDLC		GND CON
	121.9	348.6
RENO TOWER	118.7	257.8

Rwy 8: NA- Obstacles.

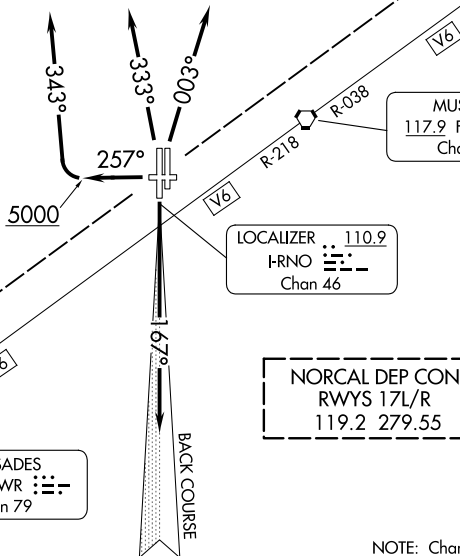
Rwy 17L: Standard with minimum climb of 730' per NM to 10900,  
or 600-1¼ with minimum climb of 352' per NM to 10900.

Rwy 17R: Standard with minimum climb of 460' per NM to 10900,  
or 300-1 with minimum climb of 395' per NM to 10900.

Rwy 26: Standard with minimum climb of 500' per NM to 9700.

Rwys 35L/R: Standard with minimum climb of 480' per NM to 8700,  
or 500-1½ with minimum climb of 430' per NM to 8700.

NORCAL DEP CON  
RWYS 26 AND 35L/R  
126.3 353.9



NORCAL DEP CON  
RWYS 17L/R  
119.2 279.55

NOTE: Chart not to scale.

### DEPARTURE ROUTE DESCRIPTION

**TAKEOFF RUNWAYS 17L/R:** Climb on heading 167° and I-RNO localizer south course.

Thence. . . .

**TAKEOFF RUNWAY 26:** Climb on heading 257° to 5000 then climbing right turn heading 343°. Thence. . . .

**TAKEOFF RUNWAYS 35L/R:** Climb on heading 333° CW 003° as assigned by ATC.

Thence. . . .

. . . .All aircraft maintain FL190 or assigned altitude. Expect filed altitude within 5 minutes after departure. Expect RADAR vectors to assigned route/fix.

**LOST COMMUNICATIONS:** If not in contact with departure control within one minute after takeoff, maintain assigned heading until passing 10000, thence. . . .

**RUNWAYS 17L/R DEPARTURES:** Turn left direct FMG VORTAC, then on assigned route.

**RUNWAYS 26 and 35L/R DEPARTURES:** Turn right direct FMG VORTAC, then on assigned route.

# RENO ONE DEPARTURE

SW-4, 28 NOV 2024 to 26 DEC 2024

SW-4, 28 NOV 2024 to 26 DEC 2024