

# RNAV (RNP) W RWY 35R

RENO/TAHOE INTL (RNO)

APP CRS <b>347°</b>	Rwy Idg TDZE Apt Elev	<b>9000</b> <b>4408</b> <b>4415</b>
------------------------	-----------------------------	---

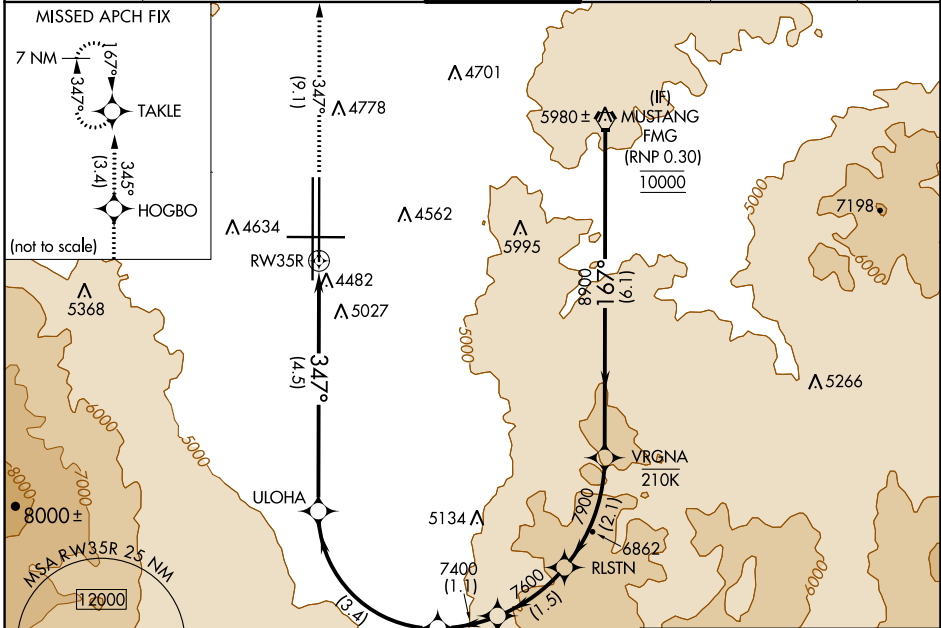
RNP AR APCH - GPS.

For uncompensated Baro-VNAV systems, procedure NA below -9°C or above 34°C.

**-13°C**

MISSED APPROACH: Climb to 11000 on track 347° to HOGBO and on track 345° to TAKLE and hold, continue climb-in-hold to 11000.  
\*Missed approach requires minimum climb of 301 feet per NM to 7150.

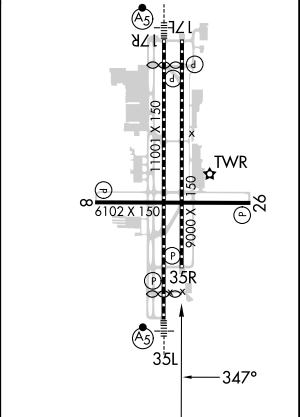
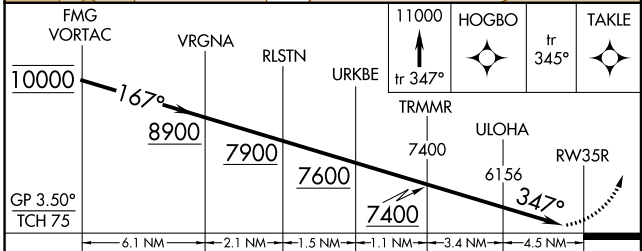
D-ATIS <b>135.8 363.0</b>	NORCAL APP CON <b>119.2 279.55 126.3 353.9</b>	RENO TOWER <b>118.7 257.8</b>	GND CON <b>121.9 348.6</b>	CLNC DEL <b>124.9 370.85</b>	CPDLC
------------------------------	---	----------------------------------	-------------------------------	---------------------------------	-------



SW-4, 28 NOV 2024 to 26 DEC 2024

SW-4, 28 NOV 2024 to 26 DEC 2024

ELEV 4415	<b>D</b> TDZE 4408
HIRL Rwys 17R-35L and 17L-35R	
REIL Rwys 8, 17L, 26, and 35R	
MIRL Rwy 8-26	



CATEGORY	A	B	C	D
RNP 0.11 DA*	4762-1 354 (400-1)			
RNP 0.30 DA	5349-2½ 941 (1000-2½)			

## AUTHORIZATION REQUIRED