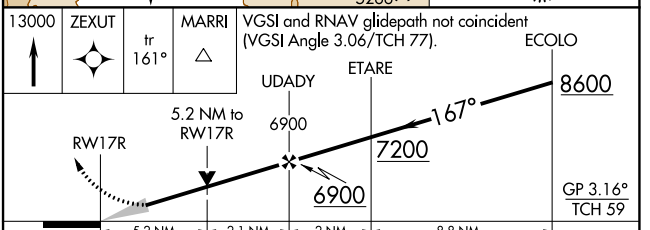
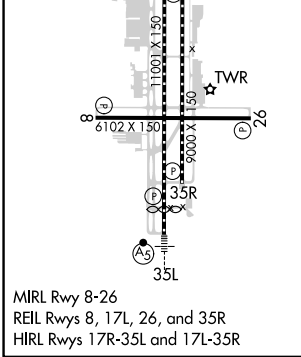
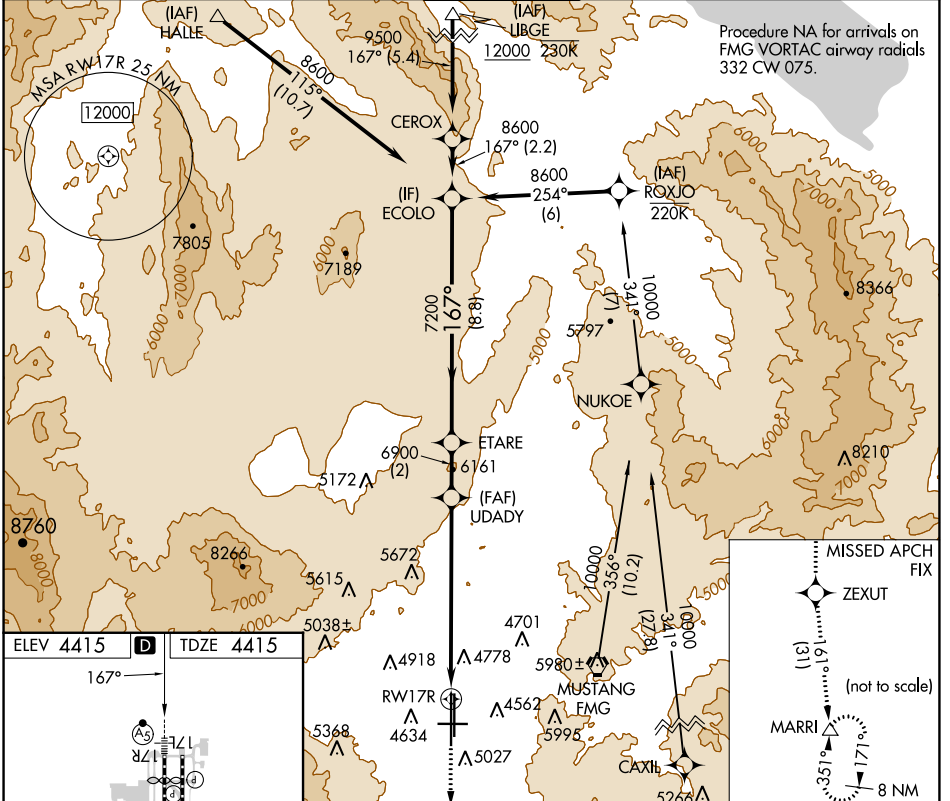


WAAS CH 78309 W17B	APP CRS 167°	Rwy Idg TDZE Apt Elev	10001 4415 4415
--	------------------------	-----------------------------	--

RNAV (GPS) X RWY 17R

RENO/TAHOE INTL (RNO)

RNP APCH - GPS.				MALSR		MISSED APPROACH: Climb to 13000 direct ZEXUT and on track 161° to MARRI and hold.	
<p>▼ For inop ALS, increase LPV all Cats visibility to 2 1/2 SM. ▲ Inop table does not apply to LNAV all Cats.</p>							
D-ATIS	NORCAL APP CON			RENO TOWER	GND CON	CLNC DEL	CPDLC
135.8 363.0	119.2 279.55	126.3 353.9		118.7 257.8	121.9 348.6	124.9 370.85	



CATEGORY	A	B	C	D
LPV DA	5239-1 7/8 824 (900-1%)			
LNAV MDA	6200/40 1785 (1800-3/4)	6200/55 1785 (1800-1)	6200-3	1785 (1800-3)

SW-4, 28 NOV 2024 to 26 DEC 2024

SW-4, 28 NOV 2024 to 26 DEC 2024