

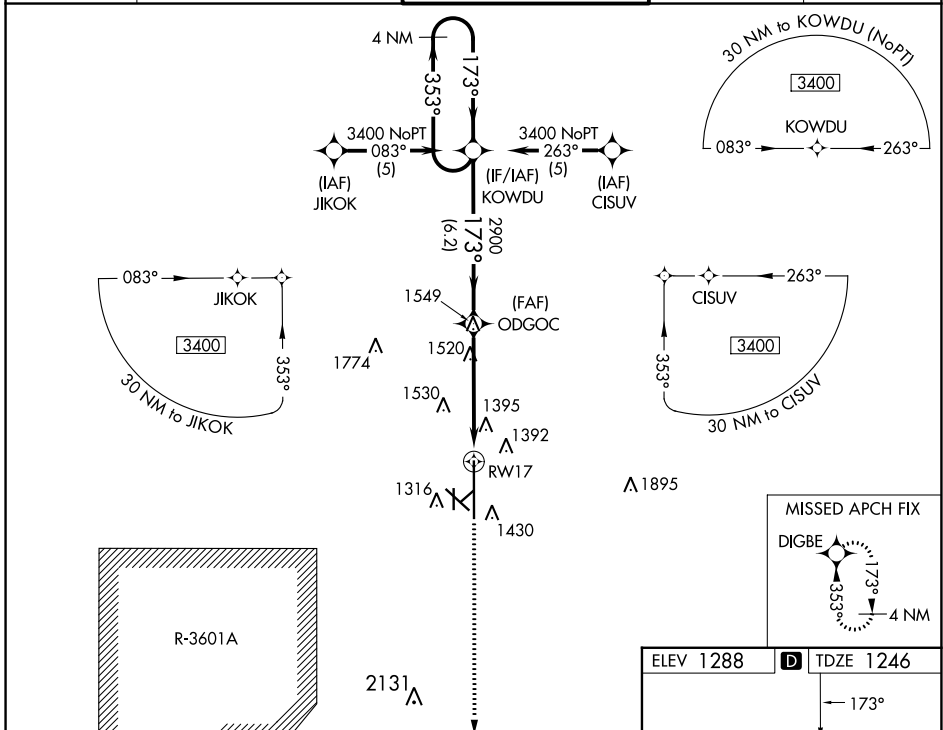
WAAS CH <b>70322</b> <b>W17A</b>	APP CRS <b>173°</b>	Rwy Idg <b>12300</b> TDZE <b>1246</b> Apt Elev <b>1288</b>
--	------------------------	--

# RNAV (GPS) RWY 17

SALINA RGNL (SLN)

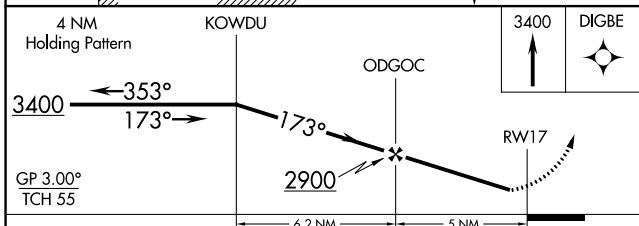
DME/DME RNP-0.3 NA. Baro-VNAV NA below -17°C (2°F). Circling NA for Cat D southwest of Rwy 12-30. Inoperative table does not apply.	<b>MALS</b> 	<b>MISSED APPROACH:</b> Climb to 3400 direct DIGBE and hold.
---	-----------------	--

ATIS <b>120.15</b>	KANSAS CITY CENTER <b>134.9 363.2</b>	<b>SALINA TOWER *</b> <b>119.3 (CTAF) 257.7</b>	GND CON <b>121.9 360.8</b>	UNICOM <b>122.95</b>
-----------------------	--	--	-------------------------------	-------------------------



NC-2, 28 NOV 2024 to 26 DEC 2024

NC-2, 28 NOV 2024 to 26 DEC 2024



ELEV 1288	<b>D</b> TDZE 1246
-----------	--------------------

CATEGORY	A	B	C	D
LPV DA	1496-1 250 (300-1)			
LNAV/VNAV DA	1741-1¾ 495 (500-1¾)			
LNAV MDA	1780-1 534 (500-1)	1780-1½ 534 (500-1½)	1780-1¾ 534 (500-1¾)	
CIRCLING	1820-1¾ 532 (600-1¾)	1840-1¾ 552 (600-1¾)	1860-1¾ 572 (600-1¾)	1860-2 572 (600-2)