

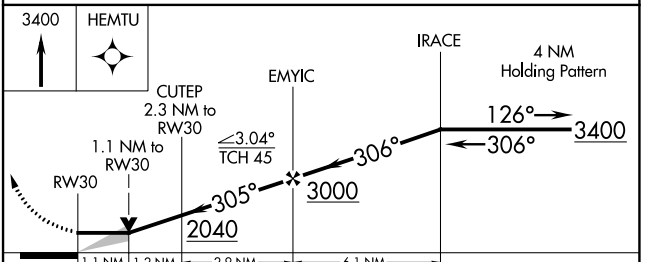
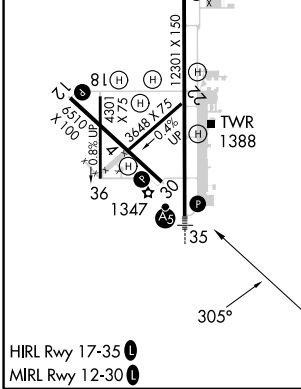
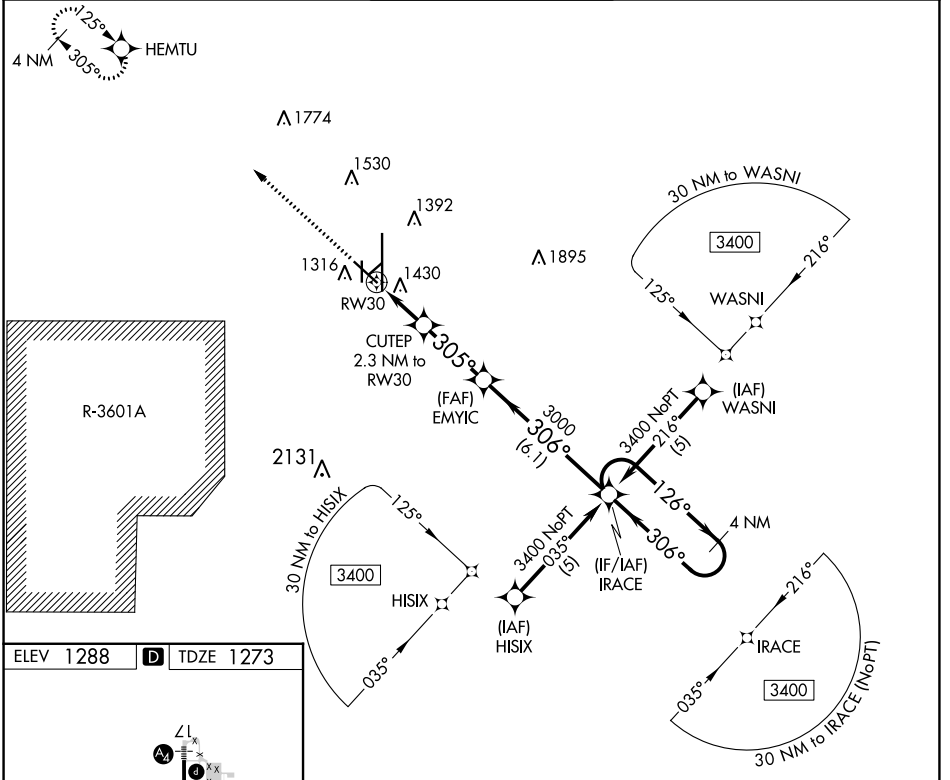
APP CRS 305°	Rwy Idg TDZE Apt Elev	6510 1273 1288
------------------------	-----------------------------	---

RNAV (GPS) RWY 30

SALINA RGNL (SLN)

▽ Circling NA for Cat D southwest of runway 12-30. ▲ DME/DME RNP-0.3 NA.	MISSED APPROACH: Climb to 3400 direct HEMTU and hold.
---	---

ATIS 120.15	KANSAS CITY CENTER 134.9 363.2	SALINA TOWER ★ 119.3 (CTAF) 0 257.7	GND CON 121.9 360.8	UNICOM 122.95
-----------------------	--	---	-------------------------------	-------------------------



CATEGORY	A	B	C	D
LNAV MDA	1680-1	407 (400-1)	1680-1½	407 (400-1½)
CIRCLING	1820-1 532 (600-1)	1840-1 552 (600-1)	1860-1½ 572 (600-1½)	1860-2 572 (600-2)

NC-2, 28 NOV 2024 to 26 DEC 2024

NC-2, 28 NOV 2024 to 26 DEC 2024