

CHALONE THREE DEPARTURE

AL-363 (FAA)

SALINAS MUNI (SNS)
SALINAS, CALIFORNIA

WOODSIDE
113.9 OSI
Chan 86

SAN JOSE
114.1 SJC
Chan 88

SALINAS
117.3 SNS
Chan 120

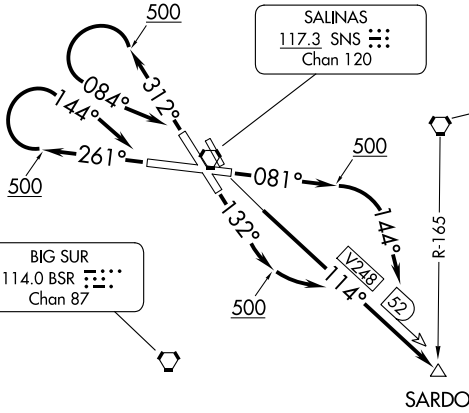
PANOCHÉ
112.6 PNX
Chan 73

BIG SUR
114.0 BSR
Chan 87

AVENAL
117.1 AVE
Chan 118

FILLMORE
112.5 FIM
Chan 72

ATIS
124.85
GND CON
121.7
NORCAL DEP CON
133.0 251.15
CTAF
119.525



TAKEOFF MINIMUMS

Rwys 8, 13: Standard with minimum climb of 360' per NM to 6000.
Rwys 26, 31: Cats A/B standard with minimum climb of 380' per NM to 6000.
Cats C/D standard with minimum climb of 550' per NM to 6000.

NOTE: Cat A/B aircraft departing Rwy 26 and 31 - Do not exceed 210 K until passing SARDO INT.

NOTE: Chart not to scale.

DEPARTURE ROUTE DESCRIPTION

TAKEOFF RUNWAY 8: Climb heading 081° to 500 then climbing right turn heading 144° to intercept SNS R-114 (V248) southeast bound to SARDO INT. Thence . . .

TAKEOFF RUNWAY 13: Climb heading 132° to 500 then climbing left turn to intercept SNS R-114 (V248) southeast bound to SARDO INT. Thence . . .

TAKEOFF RUNWAY 26: Climb heading 261° to 500 then climbing right turn heading 144° to intercept SNS R-114 (V248) southeast bound to SARDO INT. Thence . . .

TAKEOFF RUNWAY 31: Climb heading 312° to 500 then climbing left turn heading 084° to intercept SNS R-114 (V248) southeast bound to SARDO INT. Thence . . .

. . . Proceed on assigned route. Expect clearance to filed altitude 5 minutes after departure.

CHALONE THREE DEPARTURE