

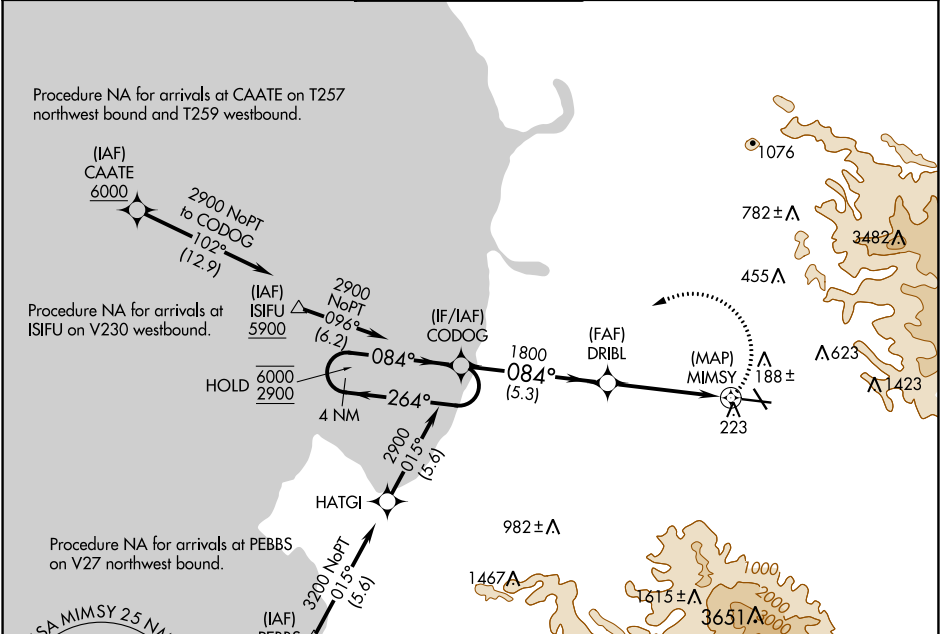
APP CRS	Rwy Idg	5608
084°	TDZE	76
	Apt Elev	84

RNAV (GPS) RWY 8

SALINAS MUNI (SNS)

RNP APCH-GPS.	MISSED APPROACH: (Do not exceed 185K until CODOG) Climbing left turn to 2900 direct CODOG and hold, continue climb-in-hold to 2900.
Circling Cat C/D NA northeast of Rwy 13 and north of Rwy 26.	

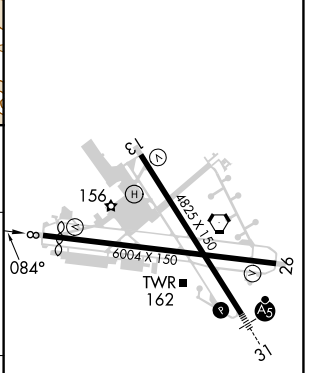
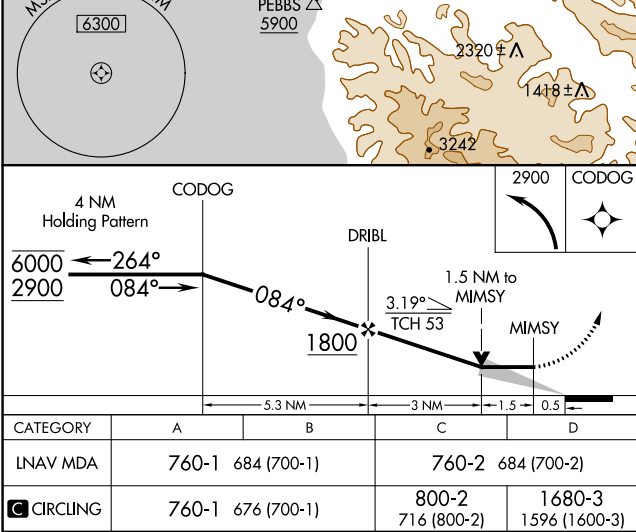
ATIS 124.85	NORCAL APP CON 133.0 251.15	SALINAS TOWER * 119.525 (CTAF) 239.3	GND CON 121.7	UNICOM 123.0
-----------------------	---------------------------------------	--	-------------------------	------------------------



SW-2, 28 NOV 2024 to 26 DEC 2024

SW-2, 28 NOV 2024 to 26 DEC 2024

ELEV 84	TDZE 76
---------	---------



CATEGORY	A	B	C	D	
LNAV MDA	760-1	684 (700-1)	760-2	684 (700-2)	
CIRCLING	760-1	676 (700-1)	800-2 716 (800-2)	1680-3 1596 (1600-3)	
					HIRL Rwy 13-31 MIRL Rwy 8-26 REIL Rws 13 and 26