

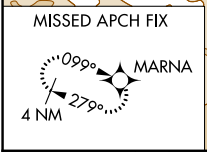
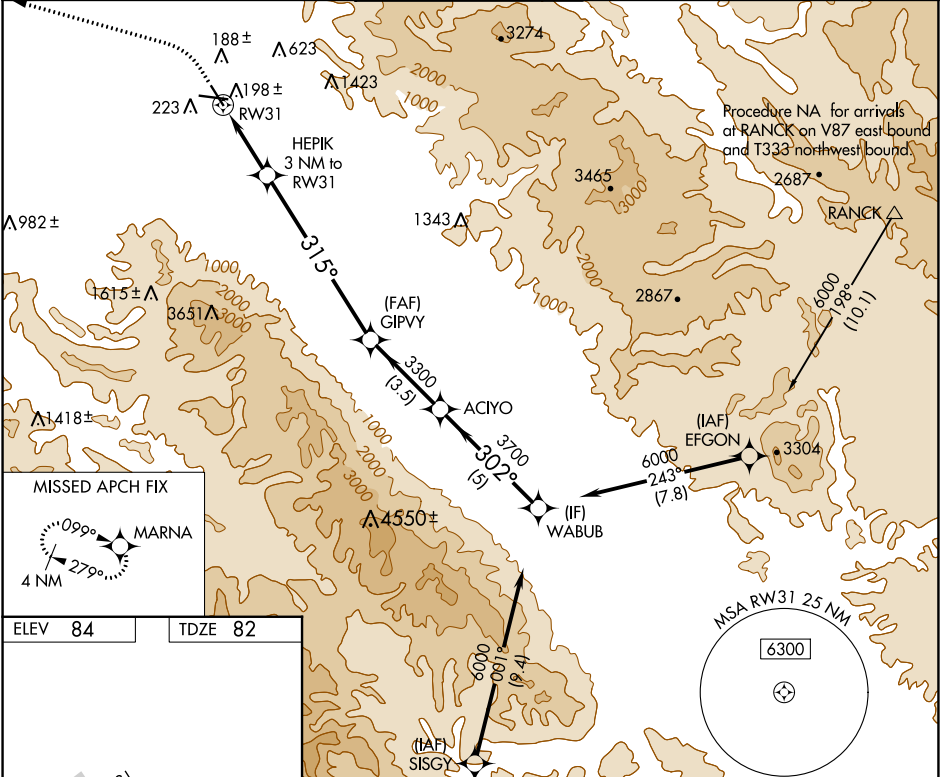
APP CRS	Rwy Idg	4825
315°	TDZE	82
	Apt Elev	84

RNAV (GPS) Y RWY 31

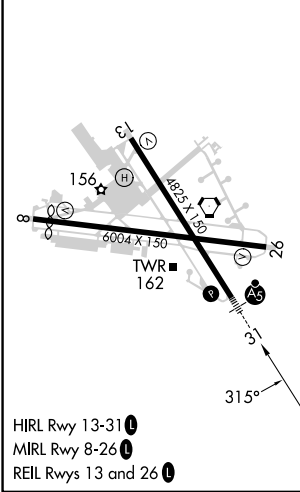
SALINAS MUNI (SNS)

RNP APCH - GPS.		MALSR	MISSED APPROACH: Climb to 600, then climbing left turn to 3000 direct MARNA and hold, continue climb-in-hold to 3000.	
<p>⚠ Circling NA for Cat C northeast of Rwy 13 and north of Rwy 26. Circling NA for Cat D northeast of Rwy 13-31.</p>				

ATIS 124.85	NORCAL APP CON 133.0 251.15	SALINAS TOWER * 119.525 (CTAF) 0 239.3	GND CON 121.7	UNICOM 123.0
-----------------------	---------------------------------------	--------------------------------------------------	-------------------------	------------------------



ELEV 84	TDZE 82
---------	---------



- HIRL Rwy 13-31
- MIRL Rwy 8-26
- REIL Rwy 13 and 26

600	3000	MARN	VGS1 and descent angles not coincident (VGS1 Angle 3.00/TCH 59).		WABUB
↑	↻	⬠	HEPIK 3 NM to RWY 31	≤ 3.00° TCH 50	
1 NM to RWY 31		1 NM to RWY 31		315°	302°
1080		3300	3700	6000	
1 NM		2 NM	7 NM	3.5 NM	5 NM
CATEGORY	A	B	C	D	
LNAV MDA	460/24	378 (400-½)	460/35	378 (400-¾)	
<input checked="" type="checkbox"/> CIRCLING	540-1	456 (500-1)	800-2 716 (800-2)	1620-3 1536 (1600-3)	

SW-2, 28 NOV 2024 to 26 DEC 2024

SW-2, 28 NOV 2024 to 26 DEC 2024