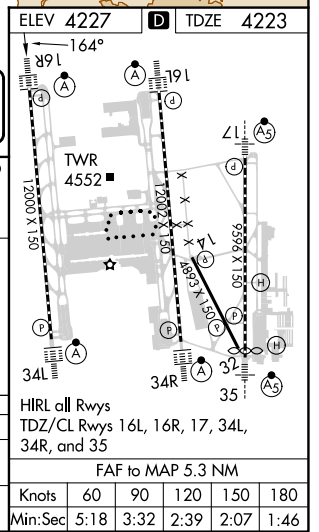
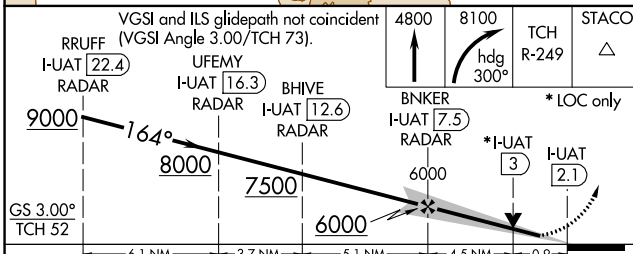
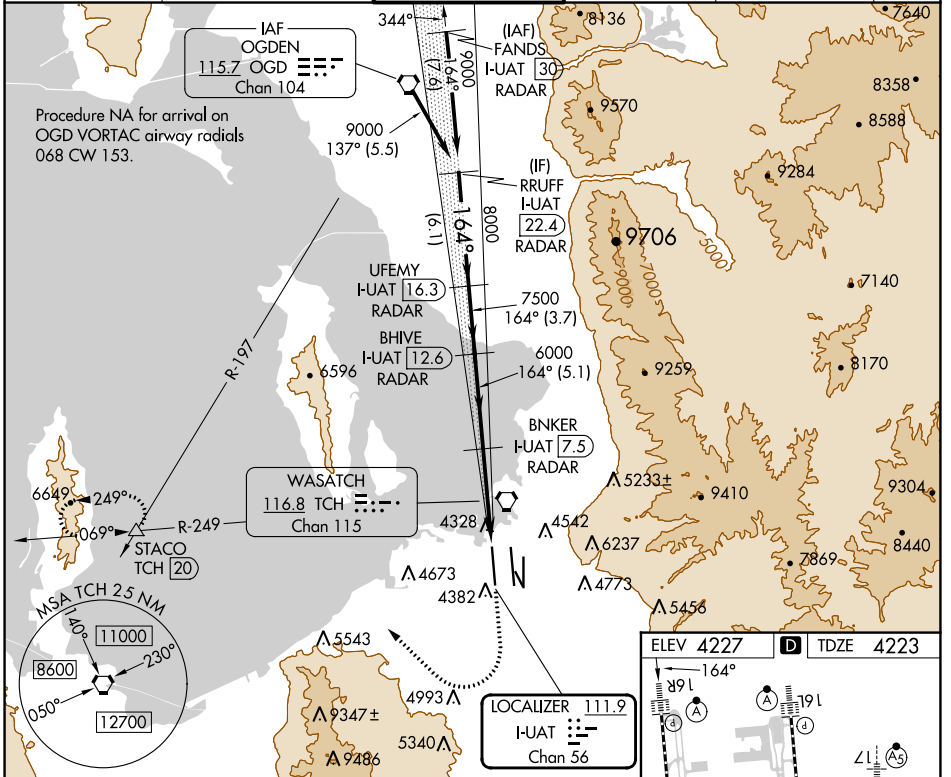


LOC/DME I-UAT 111.9 Chan 56	APP CRS 164°	Rwy ldg 12000 TDZE 4223 Apt Elev 4227
---	------------------------	--

ILS or LOC RWY 16R

SALT LAKE CITY INTL (SLC)

DME or RADAR required.		ALSF-2	MISSED APPROACH: Climb to 4800 then climbing right turn to 8100 on heading 300° and on TCH VORTAC R-249 to STACO INT/TCH 20 DME and hold.		
▼ Simultaneous approach authorized. For inop ALS, increase S-LOC 16R Cat C and D visibilities to RVR 5500.					
D-ATIS 124.75 125.625	SALT LAKE CITY APP CON 125.7 284.6	SALT LAKE CITY TOWER 132.65 336.4	GND CON 123.775 348.6	CLNC DEL 127.3 379.975	CPDLC



CATEGORY	A	B	C	D
S-ILS 16R	4423/18		200 (200-½)	
S-LOC 16R	4580/24	357 (400-½)	4580/30 357 (400-¾)	4580/40 357 (400-¾)

FAF to MAP 5.3 NM					
Knots	60	90	120	150	180
Min:Sec	5:18	3:32	2:39	2:07	1:46

SW-4, 28 NOV 2024 to 26 DEC 2024

SW-4, 28 NOV 2024 to 26 DEC 2024