

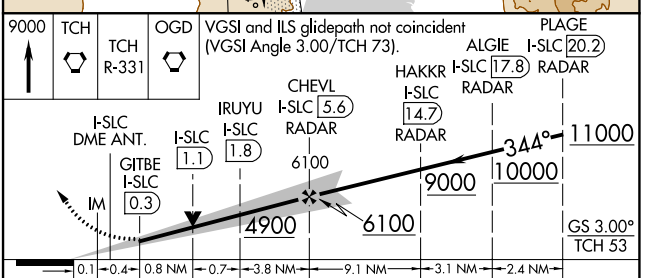
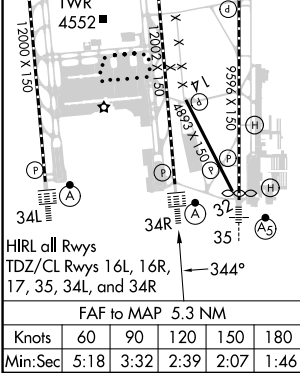
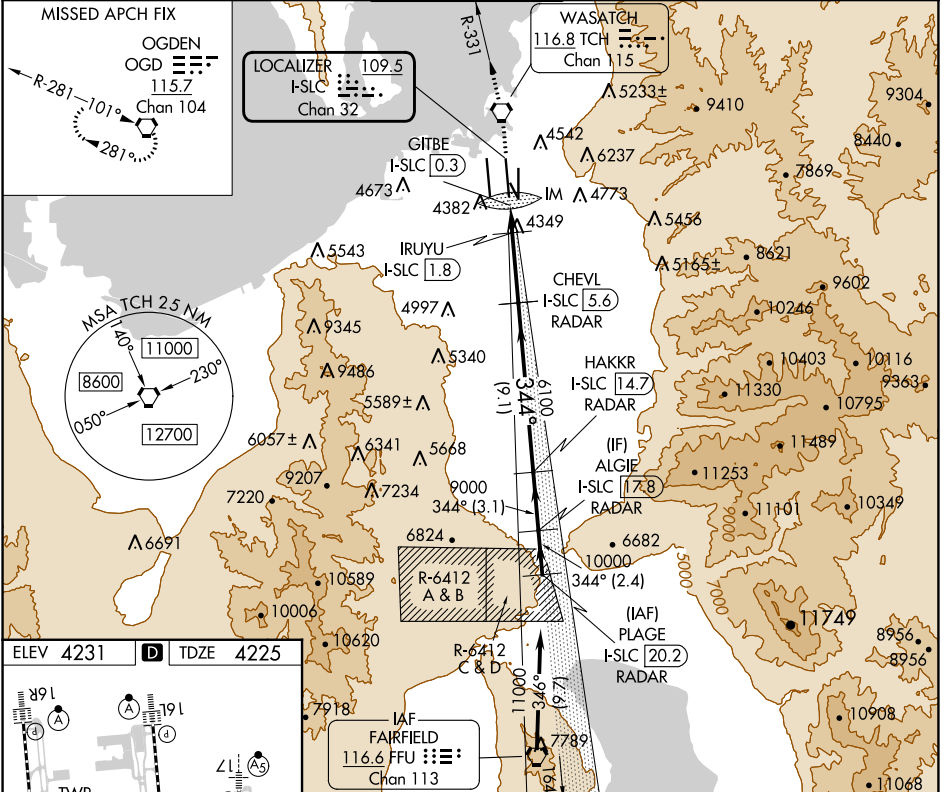
LOC/DME I-SLC <b>109.5</b> Chan 32	APP CRS <b>344°</b>	Rwy Idg <b>12002</b> TDZE <b>4225</b> Apt Elev <b>4231</b>
--	------------------------	--

# ILS or LOC RWY 34R

SALT LAKE CITY INTL (SLC)

DME required for LOC only.		ALSIF-2	MISSED APPROACH: Climb to 9000 direct TCH VORTAC and on TCH VORTAC R-331 to OGD VORTAC and hold.		
Simultaneous approach authorized.					

D-ATIS <b>124.75 125.625</b>	SALT LAKE CITY APP CON <b>125.7 284.6</b>	SALT LAKE CITY TOWER <b>119.05 257.8</b>	GND CON <b>123.775 348.6</b>	CLNC DEL <b>127.3 379.975</b>	CPDLC
---------------------------------	--	---	---------------------------------	----------------------------------	-------



CATEGORY	A	B	C	D
S-ILS 34R	4425/18 200 (200-½)			
S-LOC 34R	4700/24	475 (500-½)	4700/50	475 (500-1)

SW-4, 28 NOV 2024 to 26 DEC 2024

SW-4, 28 NOV 2024 to 26 DEC 2024