

SALT LAKE CITY, UTAH

AL-365 (FAA)

24305

LDA RWY 35


SALT LAKE CITY INTL (SLC)

LOC/DME I-UTJ 111.5 Chan 52	APP CRS 344°	Rwy Idg 9272 TDZE 4227 Apt Elev 4231
-------------------------------------------------	------------------------	--------------------------------------------------------------------------

DME required.

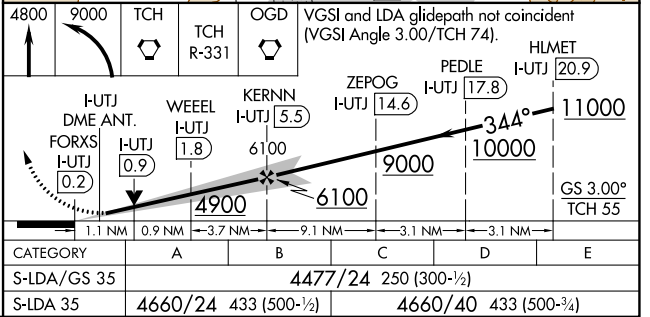
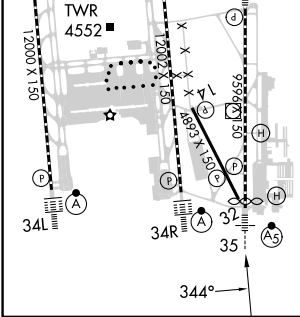
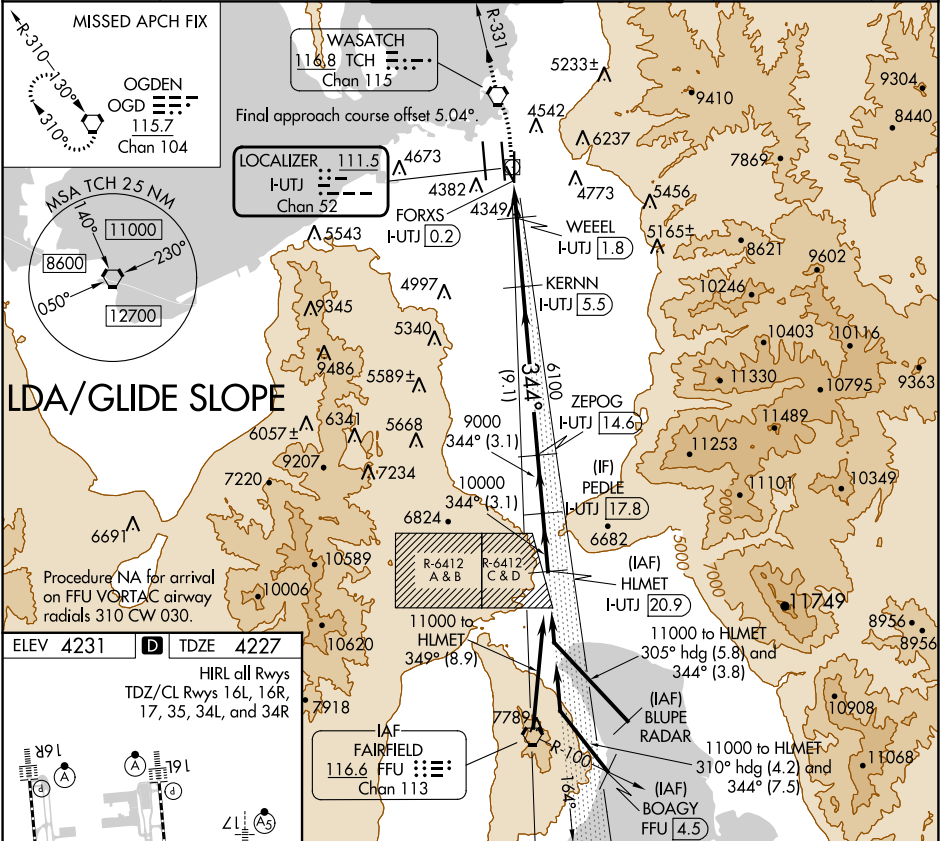
Simultaneous approach authorized. For inop ALS, increase S-LDA/GS 35 Cat E visibility to RVR 4000, increase S-LDA 35 Cat E visibility to 1/4 SM.

D-ATIS 124.75 125.625	SALT LAKE CITY APP CON 125.7 284.6	SALT LAKE CITY TOWER 118.3 257.8
---------------------------------	----------------------------------------------	--------------------------------------------

MALSRL


MISSED APPROACH: Climb to 4800 then climbing left turn to 9000 direct TCH VORTAC and on TCH VORTAC R-331 to OGD VORTAC and hold.

GND CON 121.9 348.6	CLNC DEL 127.3 379.975	CPDLC
-------------------------------	----------------------------------	-------



SW-4, 28 NOV 2024 to 26 DEC 2024

SW-4, 28 NOV 2024 to 26 DEC 2024