

ARRIVAL ROUTE DESCRIPTION

BRYCE CANYON TRANSITION (BCE.QWENN5)
MILFORD TRANSITION (MLF.QWENN5)

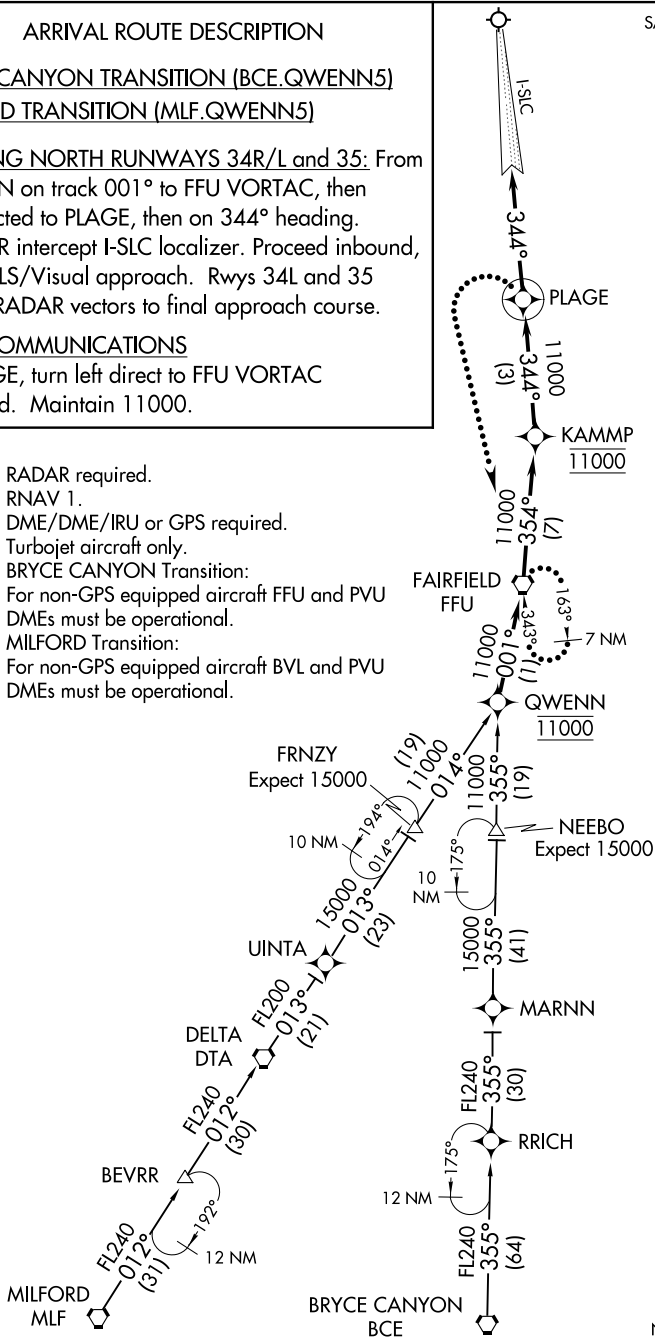
LANDING NORTH RUNWAYS 34R/L and 35: From QWENN on track 001° to FFU VORTAC, then as depicted to PLAGE, then on 344° heading. Rwy 34R intercept I-SLC localizer. Proceed inbound, expect ILS/Visual approach. Rwy 34L and 35 expect RADAR vectors to final approach course.

LOST COMMUNICATIONS

At PLAGE, turn left direct to FFU VORTAC and hold. Maintain 11000.

SALT LAKE CITY APP CON
128.6 322.3
D-ATIS
124.75 125.625

- NOTE: RADAR required.
- NOTE: RNAV 1.
- NOTE: DME/DME/IRU or GPS required.
- NOTE: Turbojet aircraft only.
- NOTE: BRYCE CANYON Transition:
For non-GPS equipped aircraft FFU and PVU DMEs must be operational.
- NOTE: MILFORD Transition:
For non-GPS equipped aircraft BVL and PVU DMEs must be operational.



NOTE: Chart not to scale.