

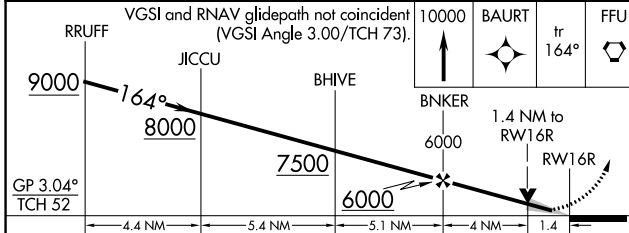
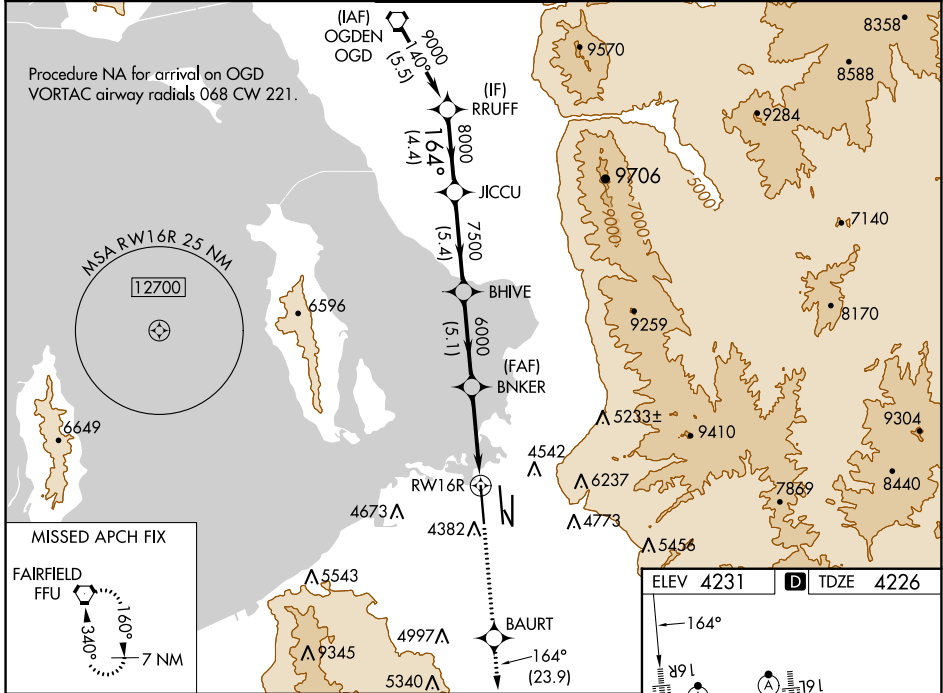
WAAS CH <b>42746</b> <b>W16A</b>	APP CRS <b>164°</b>	Rwy Idg <b>12000</b> TDZE <b>4226</b> Apt Elev <b>4231</b>
--	------------------------	--

# RNAV (GPS) RWY 16R

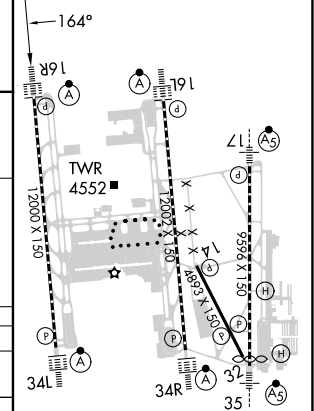
SALT LAKE CITY INTL (SLC)

<b>RNP APCH - GPS.</b> ⚠ Simultaneous approach authorized. LNAV procedure NA during simultaneous operations. Use of FD or AP required during simultaneous operations. For uncompensated Baro-VNAV systems, LNAV/VNAV NA below -10°C or above 46°C. For inop ALS, increase LPV Cat E visibility to RVR 4000, increase LNAV/VNAV Cat E visibility to RVR 6000, and increase LNAV Cat C/D/E visibility to 1½ SM.		ALSF-2 	MISSED APPROACH: Climb to 10000 direct BAURT and on track 164° to FFU VORTAC and hold.
--	--	------------	--

D-ATIS <b>124.75 125.625</b>	SALT LAKE CITY APP CON <b>125.7 284.6</b>	SALT LAKE CITY TOWER <b>132.65 336.4</b>	GND CON <b>123.775 348.6</b>	CLNC DEL <b>127.3 379.975</b>	CPDLC
---------------------------------	--	---	---------------------------------	----------------------------------	-------



ELEV 4231	<b>D</b> TDZE 4226
-----------	--------------------



RRUFF	JICCU	BHIVE	BNKER	BAURT	FFU
9000	8000	7500	6000	10000	
GP 3.04°		TCH 52			
4.4 NM	5.4 NM	5.1 NM	4 NM	1.4 NM	
CATEGORY	A	B	C	D	E
LPV DA	4426/18		200 (200-½)		
LNAV/VNAV DA	4620/35		394 (400-¾)		
LNAV MDA	4740/24	514 (600-½)	4740/55	514 (600-1)	

HIRL all Rwwys  
TDZ/CL Rwwys 16L, 16R, 17, 35, 34L, and 34R

SW-4, 28 NOV 2024 to 26 DEC 2024

SW-4, 28 NOV 2024 to 26 DEC 2024