

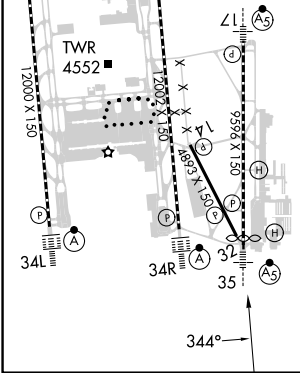
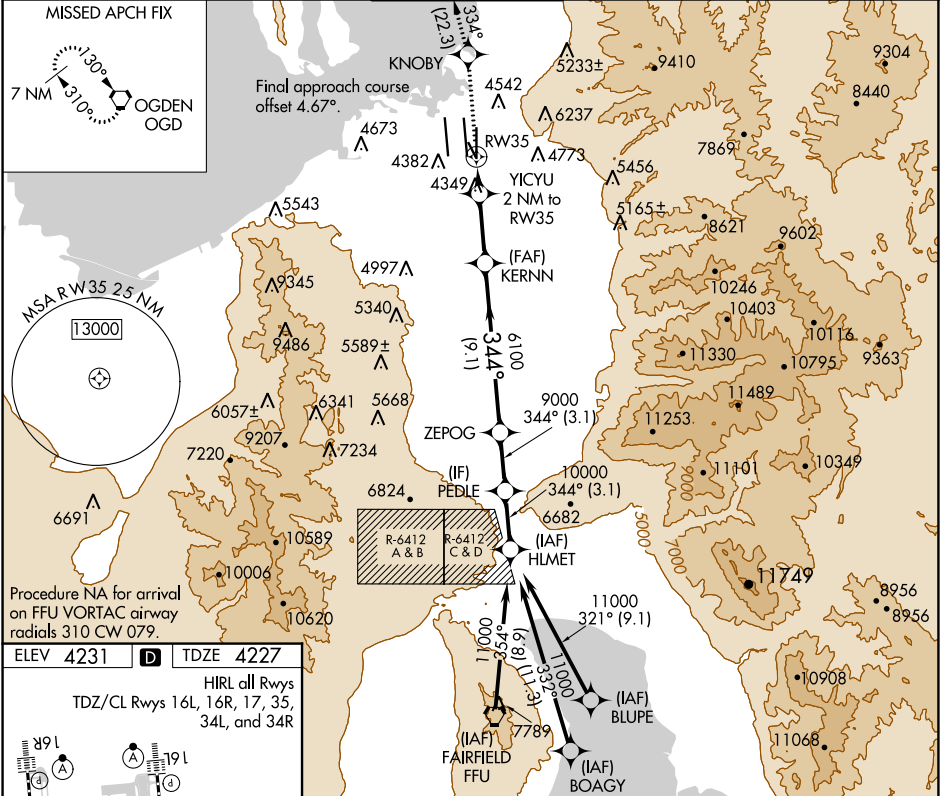
WAAS CH 42843 W35A	APP CRS 344°	Rwy Idg TDZE Apt Elev	9272 4227 4231
--	------------------------	-----------------------------	---

RNAV (GPS) RWY 35

SALT LAKE CITY INTL (SLC)

RNP APCH - GPS.	MALSRL	MISSED APPROACH: Climb to 9000 direct KNOBY and on track 334° to OGD VORTAC and hold.
▼ For inop ALS, increase LP Cat C, D and E visibility to RVR 5500, increase LNAV Cat E visibility to 1½ SM.		

D-ATIS 124.75 125.625	SALT LAKE CITY APP CON 125.7 284.6	SALT LAKE CITY TOWER 118.3 257.8	GND CON 121.9 348.6	CLNC DEL 127.3 379.975	CPDLC
---------------------------------	--	--	-------------------------------	----------------------------------	-------



ELEV 4231	D	TDZE 4227	HIRL all Rwys TDZ/CL Rwys 16L, 16R, 17, 35, 34L, and 34R				
9000	KNOBY	tr	OGD	VGSI and descent angles not coincident (VGSI Angle 3.00/TCH 74).			
↑		334°		HLMET			
				KERNN	ZEPOG	PEDLE	
				YICYU 2 NM to RW35			
				0.9 NM to RW35	3.00° TCH 55		
				RW35	6100	11000	
				4900	9000	10000	
				0.9	1.1 NM	3.7 NM	
				9.1 NM	3.1 NM	3.1 NM	
CATEGORY	A	B	C	D	E		
LP MDA	4600/24	373 (400-½)	4600/35	373 (400-½)			
LNAV MDA	4760/24	533 (600-½)	4760/55	533 (600-1)			

SW-4, 28 NOV 2024 to 26 DEC 2024

SW-4, 28 NOV 2024 to 26 DEC 2024