

WAAS CH 77927 W12A	APP CRS 121°	Rwy Idg TDZE 230 Apt Elev 261	8004
--	------------------------	---	-------------

RNAV (GPS) RWY 12

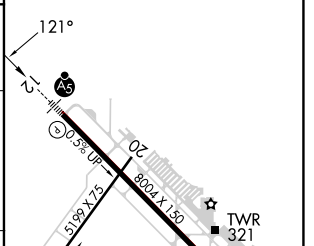
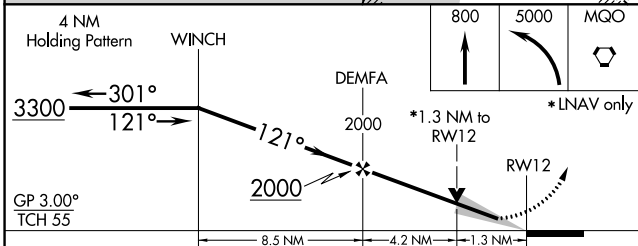
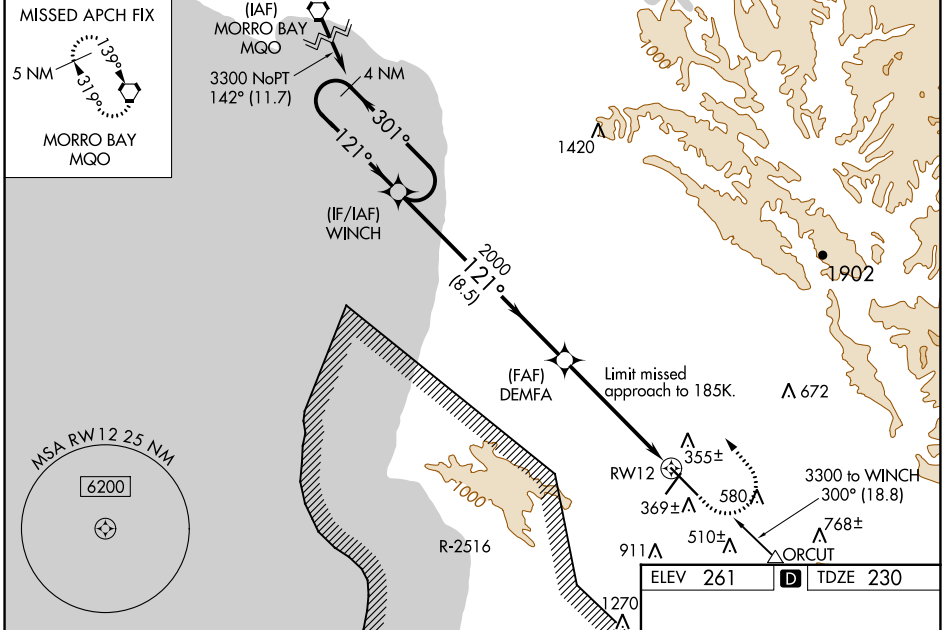
SANTA MARIA PUB/CAPT G ALLAN HANCOCK FLD (SMX)

⚠ Circling Rwy 2 NA at night. Baro-VNAV and VDP NA when using San Luis Obispo altimeter setting. For uncompensated Baro-VNAV systems, LNAV/VNAV NA below -15°C (5°F) or above 42°C (107°F). DME/DME RNP-0.3 NA. When local altimeter setting not received, use San Luis Obispo altimeter setting and increase LPV DA to 489 feet; increase LNAV/VNAV DA to 622 feet and all visibilities to RVR 3500; increase all MDAs 60 feet and LNAV visibility Cat C/D to RVR 5500. For inop MALS, increase LNAV Cat C/D visibility to 1 3/8 mile. # RVR 1800 authorized with use of FD or AP or HUD to DA, NA when using Vandenberg altimeter setting.

MALS

MISSED APPROACH:
Climb to 800 then climbing left turn to 5000 direct MQO VORTAC and hold.

ATIS 121.15	SANTA BARBARA APP CON* 124.15 327.8	SANTA MARIA TOWER* 118.3 (CTAF) 239.25	GND CON 121.9	UNICOM 122.95
-----------------------	---	--	-------------------------	-------------------------



CATEGORY	A	B	C	D
LPV DA#		430/24	200 (200-1/2)	
LNAV/VNAV DA		563/32	333 (400-5/8)	
LNAV MDA	680/24	450 (500-1/2)	680/50	450 (500-1)
CIRCLING	860-1 599 (600-1)	1000-1 739 (800-1)	1420-3 1159 (1200-3)	1540-3 1279 (1300-3)

ELEV 261 TDZE 230

HIRL Rwy 12-30

SW-3, 28 NOV 2024 to 26 DEC 2024

SW-3, 28 NOV 2024 to 26 DEC 2024