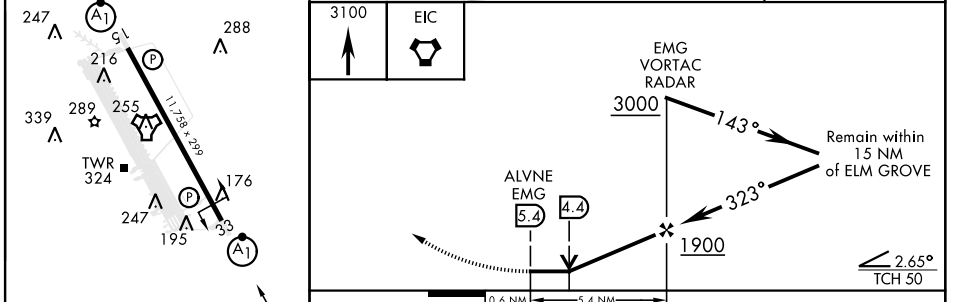
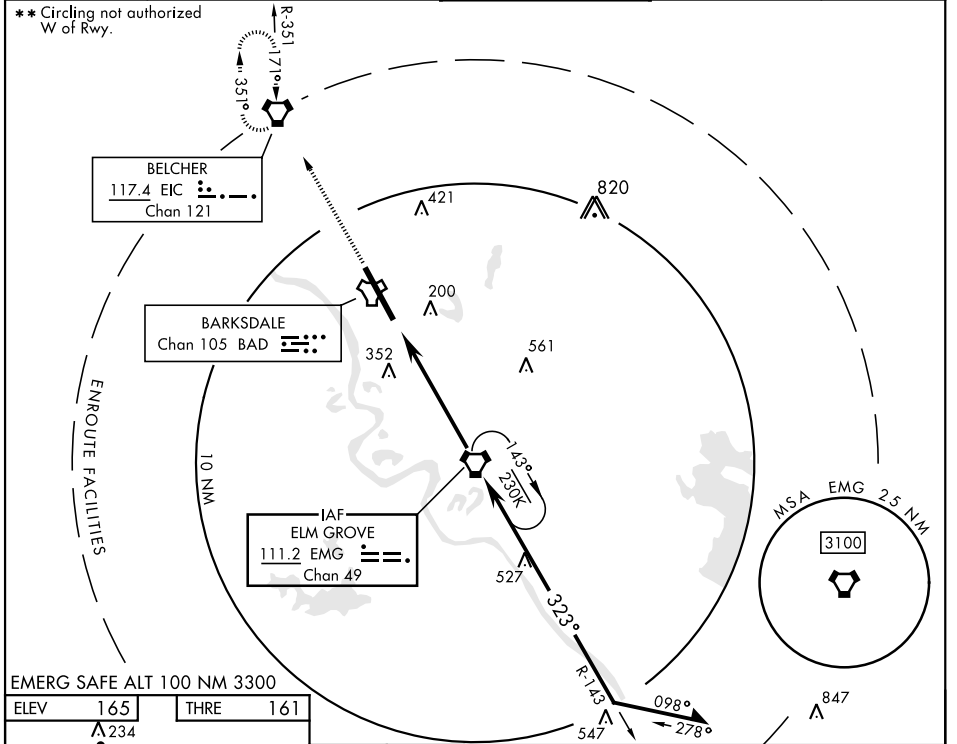


VOR/DME Y RWY 33

VORTAC EMG 111.2 Chan 49	APCH CRS 323°	Rwy Idg 11,758 THRE 161 Arprt Elev 165	[USAF]	BARKSDALE AFB (KBAD)
---------------------------------------	-------------------------	---	--------	----------------------

DME or RADAR required.	ALSF-1 	MISSED APPROACH: Climb to 3100 direct EIC VORTAC and hold.
------------------------	------------	--

ATIS 307.025	SHREVEPORT APP CON 123.75 360.725 (320°-152°) 119.9 335.55 (153°-319°)	TOWER ★ 128.25 278.3	GND CON 121.8 253.5	ASR
------------------------	--	--------------------------------	-------------------------------	-----



ELEV	165	THRE	161		
234					
247					
216					
339					
289					
255					
176					
195					
323°					
0.6 NM					
5.4 NM					
2.65°					
TCH 50					
CATEGORY	A	B	C	D	E
S-VOR 33 *	640/24	479 (500-½)	640/50	479 (500-1)	
Min:Sec	60	90	120	150	180
5:24	3:36	2:42	2:10	1:48	
<input checked="" type="checkbox"/> CIRCLING **	NOT AUTHORIZED			760-2	780-2¼
				595 (600-2)	615 (700-2¼)

VOR/DME Y RWY 33

SC-4, 28 NOV 2024 to 26 DEC 2024

SC-4, 28 NOV 2024 to 26 DEC 2024