

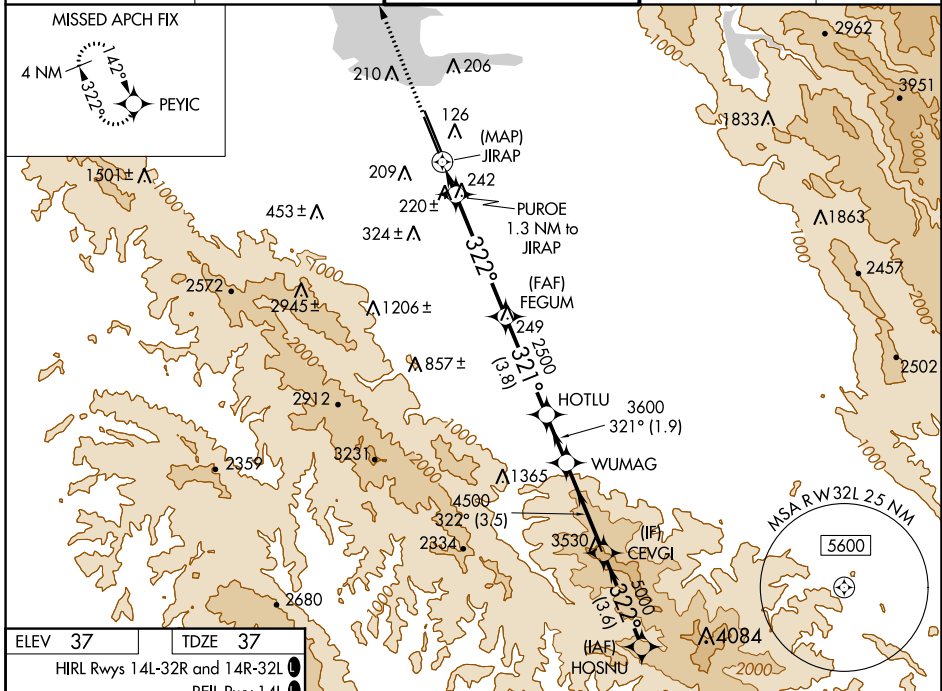
WAAS CH 50242 W32A	APP CRS 322°	Rwy Idg TDZE Apt Elev	7521 37 37
--	------------------------	-----------------------------	---------------------------------------

RNAV (GPS) RWY 32L

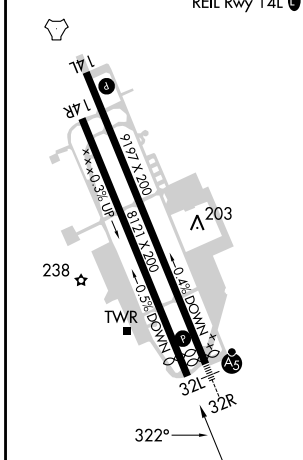
MOFFETT FEDERAL AIRFIELD (NUQ)

RNP APCH - GPS.		MISSED APPROACH: Climb to 3200 direct PEYIC and hold.		
⚠ Rwy 32L helicopter visibility reduction below 3/4 SM NA. For uncompensated Baro-VNAV systems, LNAV/VNAV NA below 0°C or above 47°C.				

ATIS 124.175 283.0	NORCAL APP CON 120.1 290.25	MOFFETT TOWER ★ 119.55 (CTAF) 259.65	GND CON 121.85 278.95	CLNC DEL 296.75
------------------------------	---------------------------------------	--	---------------------------------	---------------------------



ELEV 37	TDZE 37
HIRL Rwy 14L-32R and 14R-32L	
REIL Rwy 14L	



3200	PEYIC	HOSNU					
↑	✦	PUROE 1.3 NM to JIRAP	FEGUM	HOTLU	WUMAG	CEVGI	5500
↙	↘	0.6 NM to JIRAP	2500	3600	4500	5000	GP 3.50° TCH 55
↘	↙	JIRAP	740	2500	321°	322°	
0.5	0.6	0.7	4.7 NM	3.8 NM	1.9 NM	3.5 NM	3.6 NM
CATEGORY	A		B		C		D
LPV DA	DA		338-7/8		301 (300-7/8)		
LNAV/VNAV DA	DA		478-13/8		441 (500-13/8)		
LNAV MDA	480-1		443 (500-1)		480-13/8		443 (500-13/8)
CIRCLING	540-1 503 (600-1)		600-1 563 (600-1)		620-1 1/2 583 (600-1 1/2)		780-2 1/4 743 (800-2 1/4)

SW-2, 28 NOV 2024 to 26 DEC 2024

SW-2, 28 NOV 2024 to 26 DEC 2024