

TACAN NUQ Chan <b>123</b> <b>(117.6)</b>	APP CRS <b>321°</b>	Rwy Idg TDZE Apt Elev	<b>7521</b> <b>36</b> <b>37</b>
--	------------------------	-----------------------------	---------------------------------------

# TACAN RWY 32L

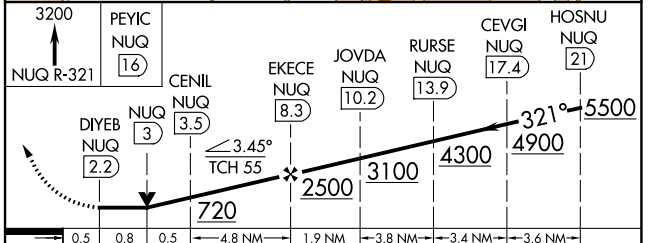
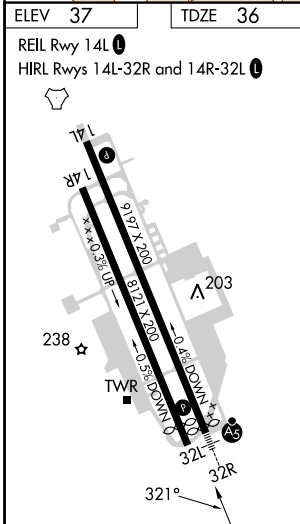
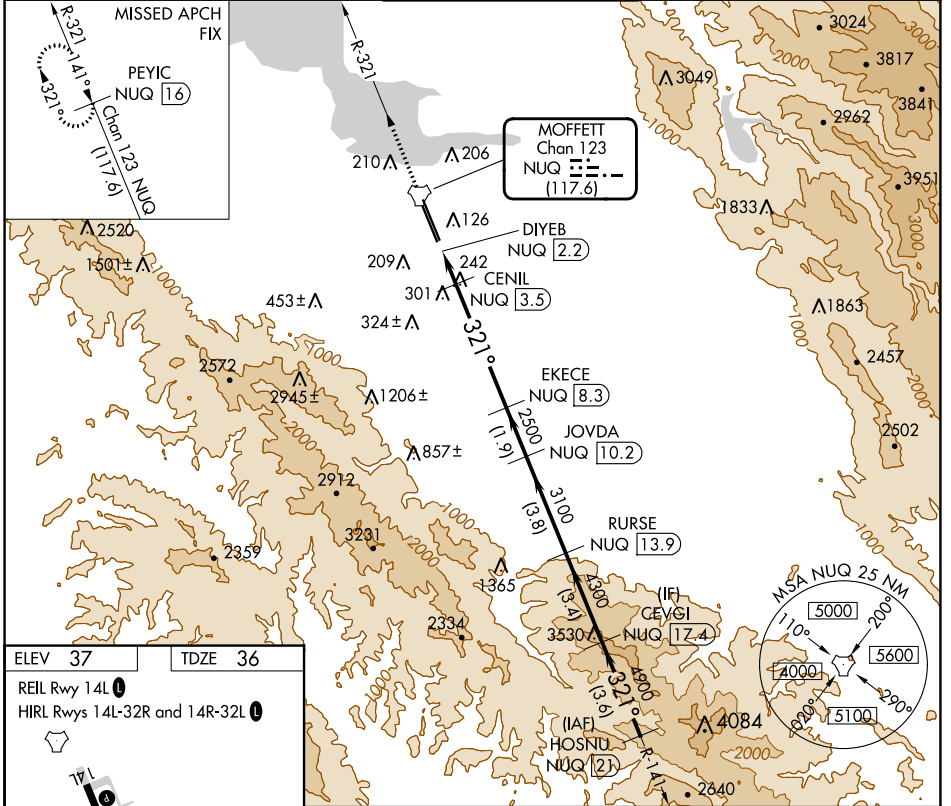
MOFFETT FEDERAL AIRFIELD (NUQ)

RADAR required for procedure entry.

**⚠** Rwy 32L helicopter visibility reduction below ¾ SM NA.

MISSED APPROACH: Climb to 3200 on NUQ TACAN R-321 to PEYIC/16 DME and hold.

ATIS <b>124.175 283.0</b>	NORCAL APP CON <b>120.1 290.25</b>	MOFFETT TOWER ★ <b>119.55 (CTAF) 259.65</b>	GND CON <b>121.85 278.95</b>	CLNC DEL <b>296.75</b>
------------------------------	---------------------------------------	--	---------------------------------	---------------------------



CATEGORY	A	B	C	D	E
S-32L	560-1	524 (600-1)	560-1½		524 (600-1½)
<b>C</b> CIRCLING	560-1 523 (600-1)	600-1 563 (600-1)	620-1½ 583 (600-1½)	780-2½ 743 (800-2½)	940-3 903 (1000-3)

SW-2, 28 NOV 2024 to 26 DEC 2024

SW-2, 28 NOV 2024 to 26 DEC 2024