

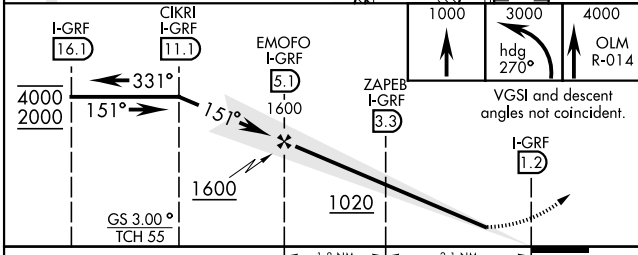
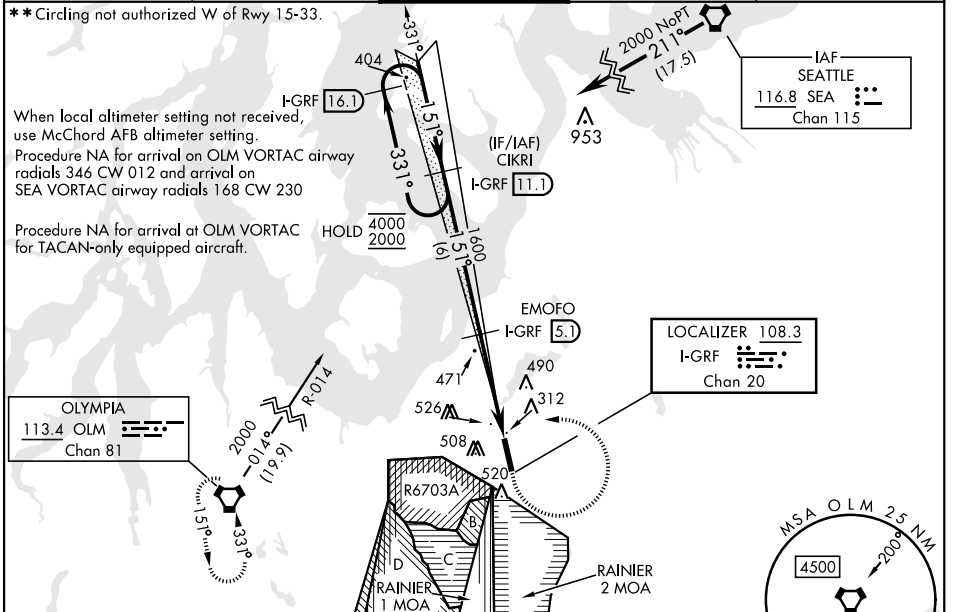
ILS or LOC RWY 15

LOC I-GRF 108.3 Chan 20	APCH CRS 151°	Rwy Idg TDZE Arprt Elev 6124 300 301	[USA]	GRAY AAF (JOINT BASE LEWIS MCCHORD) (KGRF)
---	-------------------------	--	-------	--

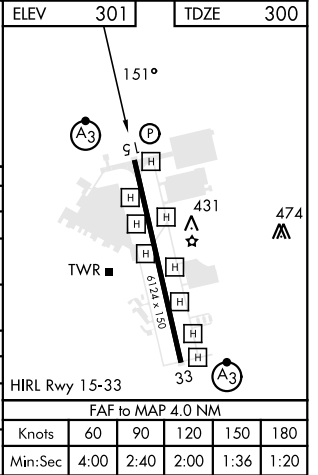
RNAV1 - GPS from SEA VORTAC.
 DME required for civil use. For non-RNAV aircraft, RADAR required from SEA VORTAC.
 * When ALS inop when using McChord AFB altimeter setting, increase LOC CAT C/D vis to RVR 55.

SSALR
 MISSED APPROACH: Climb to 1000, then climbing left turn to 3000 on hdg 270° and OLM VORTAC R-014, then continue climb to 4000 on OLM R-014 to OLM and hold.

ATIS 124.65 306.2	SEATTLE APP CON 120.1 290.9	TOWER ★ 119.325 (CTAF) 256.8	GND CON 121.9 290.2	CLNC DEL 121.9 290.2
-----------------------------	---------------------------------------	--	-------------------------------	--------------------------------



ELEV	301		TDZE	300	
CATEGORY	A	B	C	D	
S-ILS 15	500/24		200	(200-½)	
S-LOC 15	640/24	340 (400-½)	640/26	340	(400-½)
CIRCLING **	840-1	539 (600-1)	840-1½	539 (600-1½)	920-2
McCHORD FLD ALTIMETER SETTING MINIMUMS					
S-ILS 15	516/24		216	(300-½)	
S-LOC 15*	660/24	360 (400-½)	660/35	360	(400-¾)
CIRCLING **	860-1	559 (600-1)	860-1½	559 (600-1½)	940-2



ILS or LOC RWY 15

NW-1, 28 NOV 2024 to 26 DEC 2024

NW-1, 28 NOV 2024 to 26 DEC 2024