

HI-TACAN Z RWY 13

TACAN DMA Chan 123	APCH CRS 133°	Rwy Idg 13,645 TDZE 2615 Arprt Elev 2704
------------------------------	-------------------------	---------------------------------------------------------------------

[USAF]

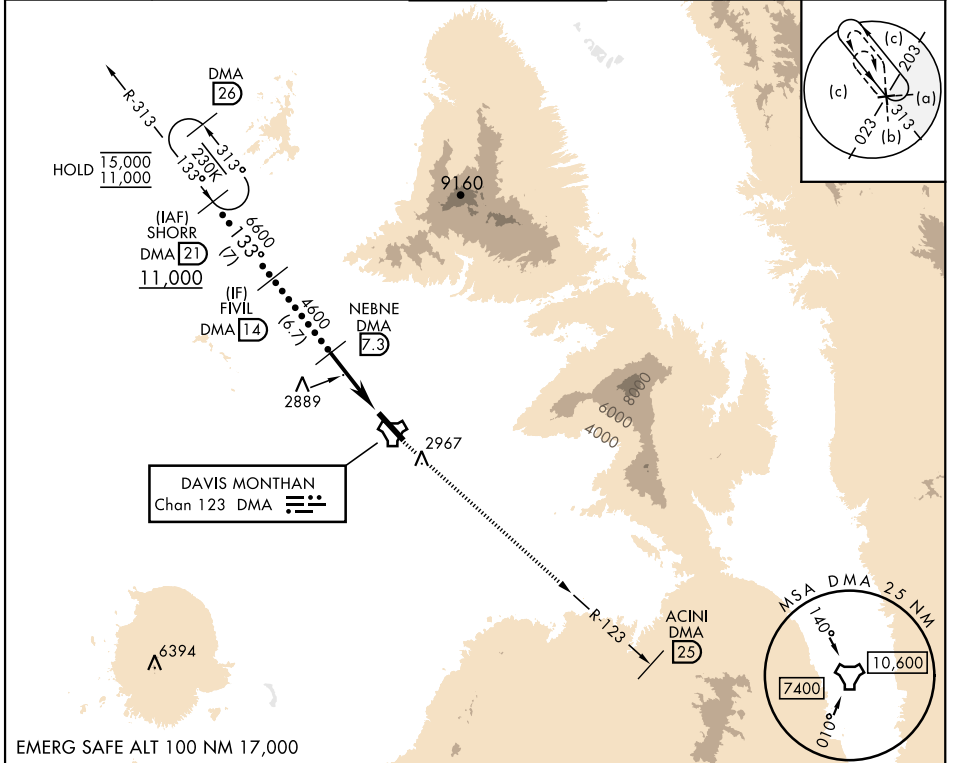
DAVIS-MONTHAN AFB (KDMA)

RNAV or RADAR required.

*Circling not authorized SW of Rwy 13-31.

MISSED APPROACH: Climbing to 8000 intercept DMA TACAN R-123 to ACINI. Expect RADAR vectors.

ATIS★ 132.3 270.1	TUCSON APP CON 066°-274° 119.4 318.1 275°-065° 125.1 269.55	TOWER 118.85 253.5	GND CON 121.8 275.8	CLNC DEL 121.8 275.8
-----------------------------	---------------------------------------------------------------------------------	------------------------------	-------------------------------	--------------------------------



EMERG SAFE ALT 100 NM 17,000

	SHORR DMA (2) 11,000	FIVIL DMA (14) 4600	NEBNE DMA (7.3) 2967	ESALE DMA (2) 2704	ACINI DMA (25) 2704	ELEV 2704	TDZE 2615
	133°		3.17°	133°		133°	
	5.3 NM		0.5 NM		TWR		
CATEGORY	C		D	E			
S-13	3160-1½		545	(500-1½)			
CIRCLING*	3280-1½ 576 (600-1½)		3420-2¼ 716 (800-2¼)	3460-2¾ 756 (800-2¾)			
	HIRL Rwy 13-31		REIL Rwy 13				

HI-TACAN Z RWY 13

SW-4, 28 NOV 2024 to 26 DEC 2024

SW-4, 28 NOV 2024 to 26 DEC 2024