

BURRO FIVE DEPARTURE (RNAV)

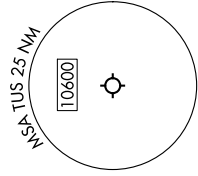
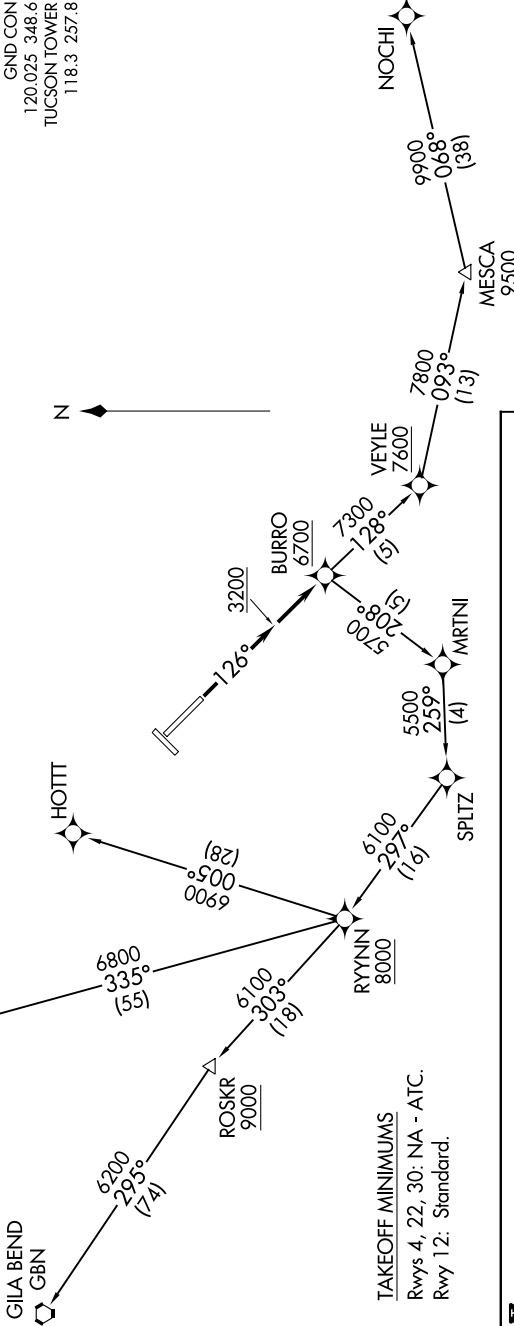
AL-430 (FAA)

TUCSON INTL (TUS)
TUCSON, ARIZONA

TUCSON DEP CON
125.1 269.55
ATIS
123.8 279.65
CLNC DEL
126.65 326.2
GND CON
120.025 348.6
TUCSON TOWER
118.3 257.8

RNAV 1 - GPS.

**TOP ALTITUDE:
17000**



NOTE: Chart not to scale.

DEPARTURE ROUTE DESCRIPTION

TAKEOFF RUNWAY 12: Climb heading 126° to 3200, then continue climb direct BURRO, cross BURRO at or above 6700, thence. . . .
 . . . on assigned transition, maintain 17000, expect filed altitude 10 minutes after departure.

- BBALL TRANSITION (BURRO5.BBALL)
- GILA BEND TRANSITION (BURRO5.GBN)
- HOTT TRANSITION (BURRO5.HOTT)
- NOCHI TRANSITION (BURRO5.NOCHI)

TAKEOFF MINIMUMS
 Rwys 4, 22, 30: NA - ATC.
 Rwy 12: Standard.

SW-4, 28 NOV 2024 to 26 DEC 2024

SW-4, 28 NOV 2024 to 26 DEC 2024

BURRO FIVE DEPARTURE (RNAV)