

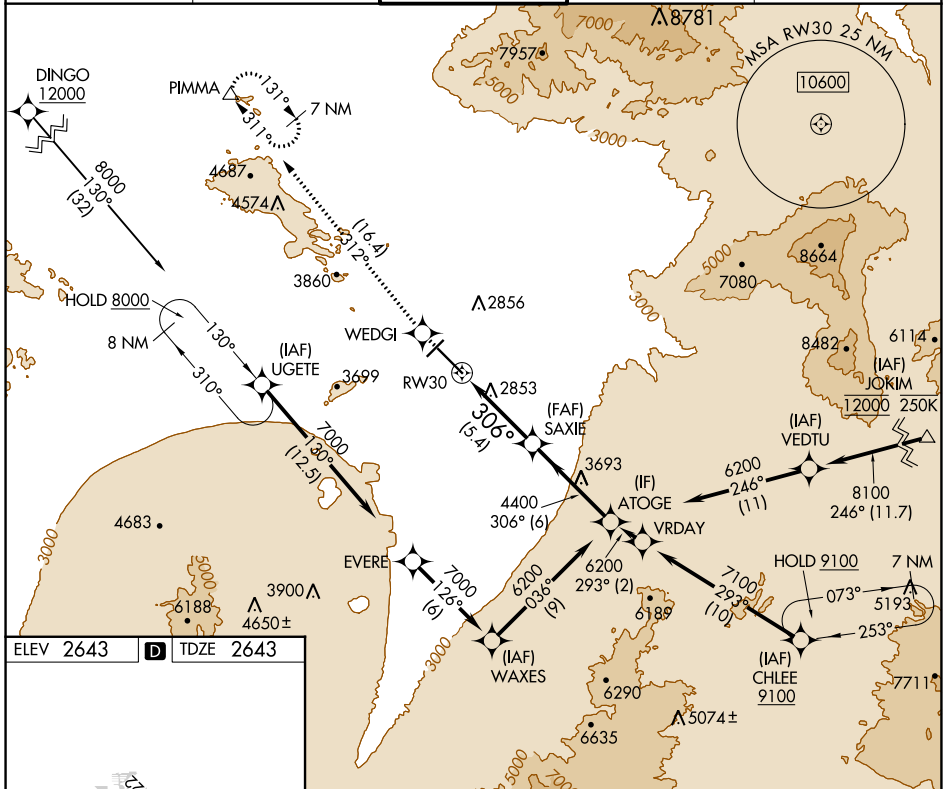
APP CRS 306°	Rwy Idg TDZE Apt Elev	10996 2643 2643
------------------------	-----------------------------	--

RNAV (RNP) Y RWY 30

TUCSON INTL (TUS)

RNP AR APCH - GPS.	MISSED APPROACH: Climb to 6800 direct WEDGI and on track 312° to PIMMA and hold.
--------------------	--

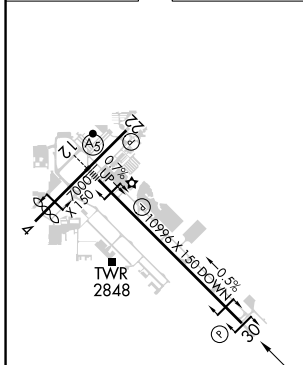
ATIS 123.8 279.65	TUCSON APP CON 119.4 318.1	TUCSON TOWER 118.3 257.8	GND CON 120.025 348.6	CLNC DEL 126.65 326.2
-----------------------------	--------------------------------------	------------------------------------	---------------------------------	---------------------------------



SW-4, 28 NOV 2024 to 26 DEC 2024

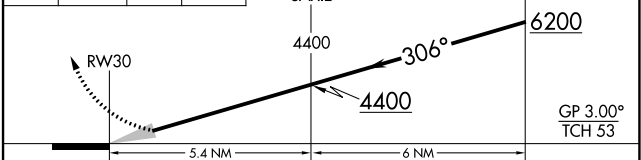
SW-4, 28 NOV 2024 to 26 DEC 2024

ELEV 2643	D	TDZE 2643
-----------	----------	-----------



HIRL Rwy 12-30
MIRL Rwy 4-22
REIL Rwy 22 and 30

6800	WEDGI	PIMMA	VGSI and RNAV glidepath not coincident (VGSI Angle 3.00/TCH 81).
↑	✧	tr 312°	△



CATEGORY	A	B	C	D
RNP 0.30 DA	3062-1½ 419 (500-1½)			

AUTHORIZATION REQUIRED