

ZONNA TWO ARRIVAL (RNAV)

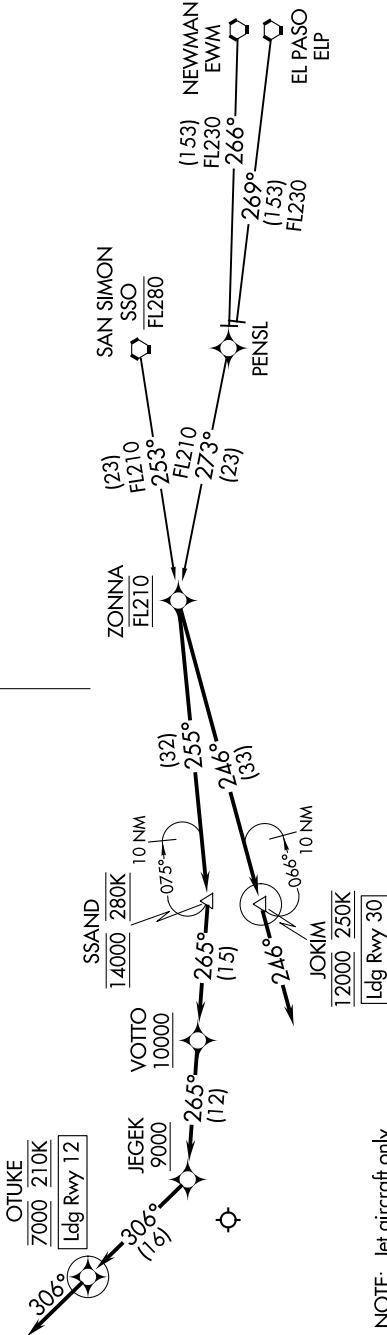
AL-430 (FAA)

TUCSON INTL (TUS)
TUCSON, ARIZONA

SW-4, 28 NOV 2024 to 26 DEC 2024

RNAV 1 - DME/DME/IRU or GPS.
RADAR required.

TUCSON APP CON
119.4 318.1
ATIS
123.8 279.65
GND CON
120.025 348.6
TUCSON TOWER
118.3 257.8



NOTE: Jet aircraft only.
NOTE: Chart not to scale.

ARRIVAL ROUTE DESCRIPTION

- EL PASO TRANSITION (ELP.ZONNA2)
- NEWMAN TRANSITION (EWM.ZONNA2)
- SAN SIMON TRANSITION (SSO.ZONNA2)

LANDING RUNWAY 12: From ZONNA on track 255° to cross SSAND at 14000 and at 280K, then on track 265° to cross VOTTO at or above 10000, then on track 265° to cross JEKEK at or above 9000, then on track 306° to cross OTUKE at 7000 and at 210K, then on track 306°. Expect RNAV (GPS) Z RWY 12 approach or RADAR vectors to final approach course.

LANDING RUNWAY 30: From ZONNA on track 246° to cross JOKIM at 12000 and at 250K, then on track 246°. Expect RNAV (GPS) Z RWY 30 approach or RADAR vectors to final approach course.

SW-4, 28 NOV 2024 to 26 DEC 2024

ZONNA TWO ARRIVAL (RNAV)

TUCSON, ARIZONA
TUCSON INTL (TUS)