

APP CRS	Rwy Idg	4600
258°	TDZE	4055
	Apt Elev	4065

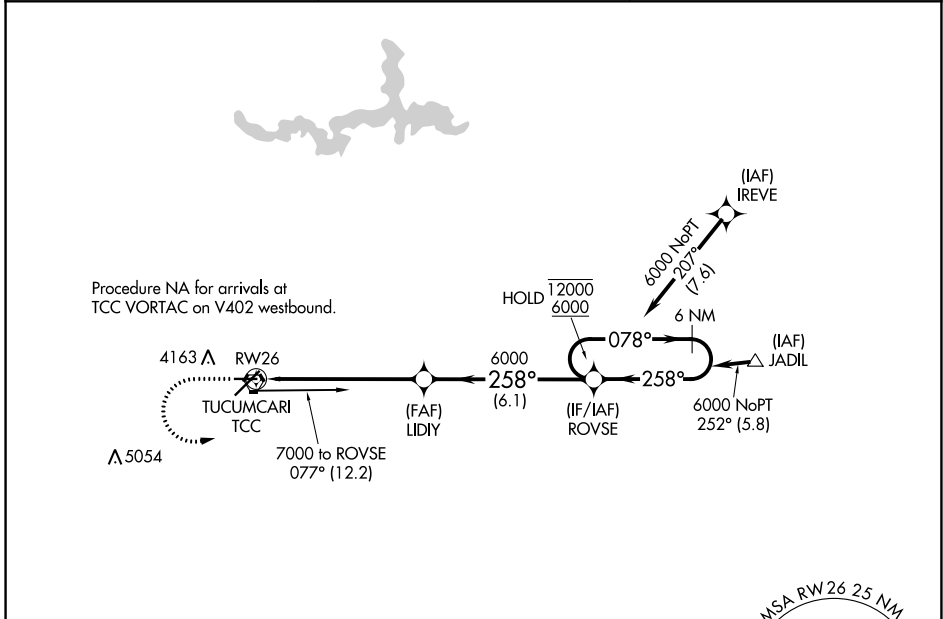
RNAV (GPS) RWY 26

TUCUMCARI MUNI (TCC)

RNP APCH.
 ▼ Circling NA for Cat D north of Rwy 8 and northwest of Rwy 21.
 When local altimeter setting not received, procedure NA.

MISSED APPROACH: Climb to 5000 then climbing left turn to 6500 direct ROVSE and hold.

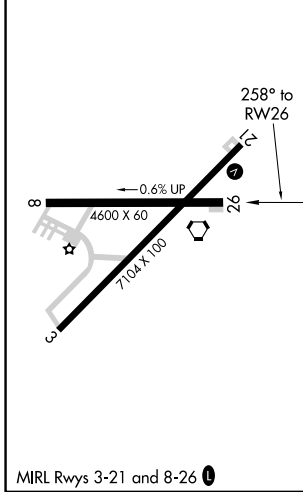
ASOS 119.275	ALBUQUERQUE CENTER 126.85 285.6	UNICOM 122.95 (CTAF) 0
------------------------	---	----------------------------------



SW-1, 28 NOV 2024 to 26 DEC 2024

SW-1, 28 NOV 2024 to 26 DEC 2024

ELEV 4065	TDZE 4055
-----------	-----------



	5000	6500	ROVSE	
	↑	↷	✦	
	LIDIY		ROVSE	6 NM Holding Pattern
	1.6 NM to RWY 26		258°	078°
	RWY 26		6000	12000
	6000		258°	6000
	1.6 NM	4.4 NM	6.1 NM	
CATEGORY	A	B	C	D
LNAV MDA	4600-1	545 (600-1)	4600-1½	545 (600-1½)
C CIRCLING	4600-1	535 (600-1)	4600-1½	4640-2
			535 (600-1½)	575 (600-2)