

SPRINGFIELD CHICOPEE, MASSACHUSETTS

RNAV (GPS) RWY 5

APCH CRS 048°	Rwy ldg TDZE Arprt Elev	10,395 237 241
-------------------------	-------------------------------	---

(USAF)

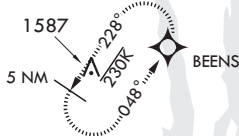
WESTOVER ARB METROPOLITAN (KCEF)

RNP APCH	ALSF-1
DME/DME RNP-0.3 NA.	
* When ALS inop, increase vis to 1 3/8 miles.	

MISSED APPROACH: Climb to 900 then climbing right turn to 2700 direct BEENS and hold.

ATIS* 127.525	BRADLEY APP CON/DEP CON 125.35 281.5	TOWER* 134.85 (CTAF) 0 348.75	GND CON 118.35 275.8
-------------------------	--	---	--------------------------------

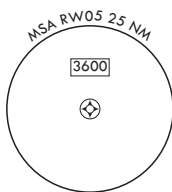
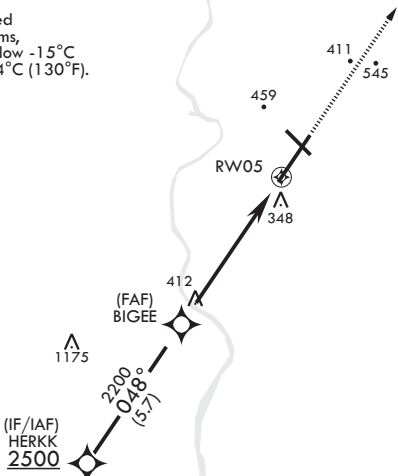
** When ALS inop, increase CAT AB RVR to 55, vis to 1 mile, CAT CDE vis to 1 3/8 miles.
*** Circling not authorized all CAT acct from Rwy 23 clockwise to Rwy 33.



1549

LNAV visibility reduction by Helicopters NA.

For uncompensated Baro-VNAV systems, Procedure NA below -15°C (5°F) or above 54°C (130°F).



EMERG SAFE ALT 100 NM 6400

HERKK 2500	VGSI and RNAV glidepath not coincident (VGSI Angle 3.00/TCH 72).	900	2700	BEENS	ELEV 241	TDZE 237
GP 3.00° TCH 53	BIGEE 2200				Rwy 5 ldg 10,395'	
	1.2 NM to RW05					
	6 NM					
CATEGORY	A	B	C	D	E	
LNAV/VNAV DA*	680/45		443	(500-7/8)		
LNAV MDA**	720/24	483 (500-1/2)	720/50	483	(500-1)	
CIRCLING***	760-1 519 (600-1)	780-1 539 (600-1)	840-1 1/2 599 (600-1 1/2)	1060-2 3/4 819 (900-2 3/4)	1080-3 839 (900-3)	

HIRL all Rwy 5

SPRINGFIELD CHICOPEE, MASSACHUSETTS

42°12'N - 72°32'W

WESTOVER ARB METROPOLITAN (KCEF)

Amdt 3 13JUN24

RNAV (GPS) RWY 5

NE-1, 28 NOV 2024 to 26 DEC 2024

NE-1, 28 NOV 2024 to 26 DEC 2024