

TACAN RWY 23

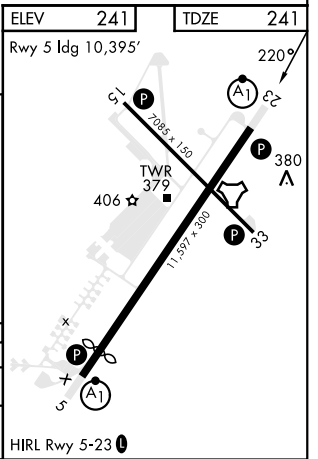
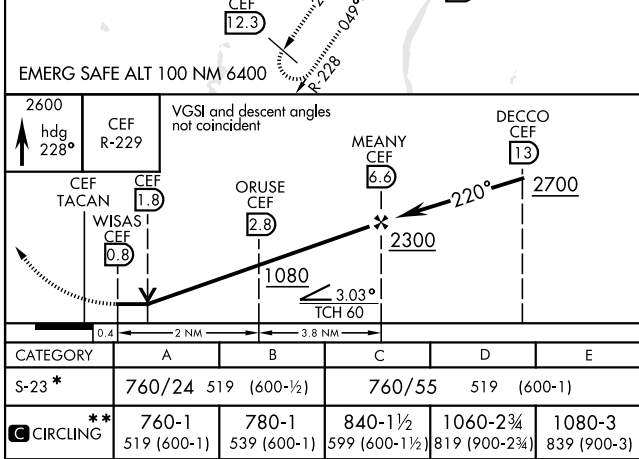
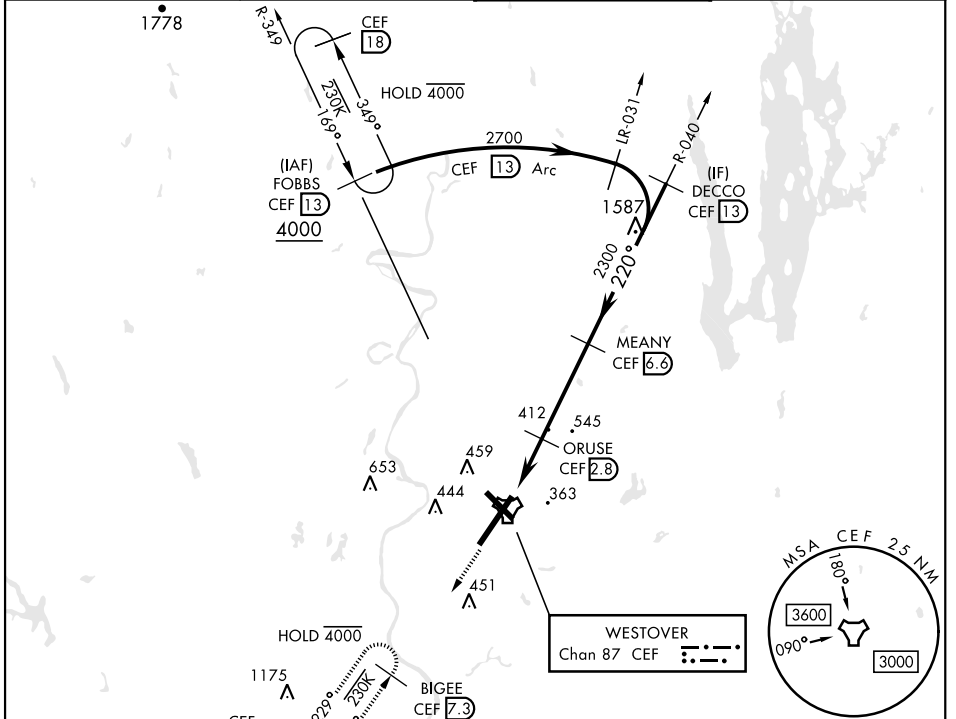
TACAN CEF Chan 87	APCH CRS 220°	Rwy Idg 11,597 TDZE 241 Arprt Elev 241	[USAF]	WESTOVER ARB METROPOLITAN (KCEF)
-----------------------------	-------------------------	---	--------	----------------------------------

▽ * When ALS inop, increase CAT AB RVR to 55 and vis to 1 mile, CAT CDE vis to 1/2 miles.
** Circling not authorized all CAT acft from RWY 23 clockwise to RWY 33.

ALSIF-1

MISSED APPROACH: Climb to 2600 on heading 228° to intercept CEF TACAN R-229 direct BIGEE and hold.

ATIS ★ 127.525	BRADLEY APP CON 125.35 281.5	TOWER ★ 134.85 (CTAF) 348.75	GND CON 118.35 275.8
--------------------------	--	--	--------------------------------



TACAN RWY 23

NE-1, 28 NOV 2024 to 26 DEC 2024

NE-1, 28 NOV 2024 to 26 DEC 2024