

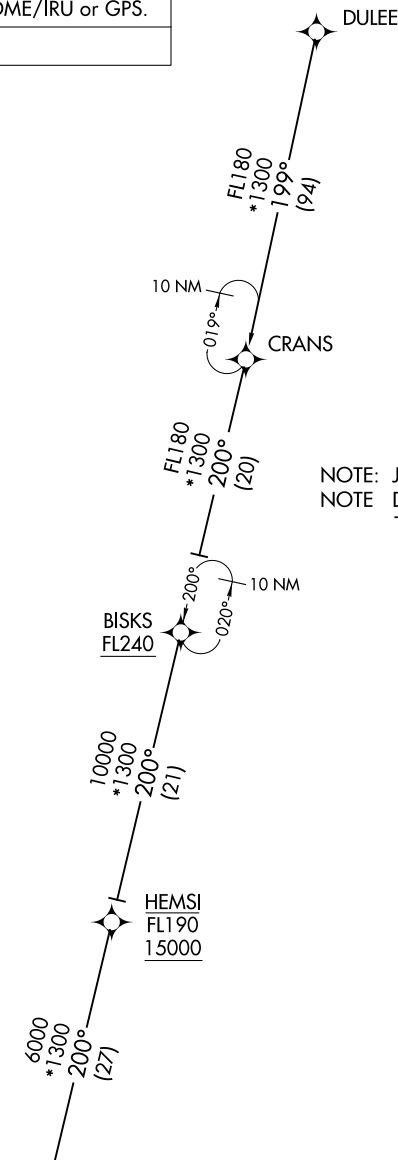
# CLMNT TWO ARRIVAL (RNAV) Transition Routes

WEST PALM BEACH, FLORIDA

RNAV 1 - DME/DME/IRU or GPS.

RADAR required.

PALM BEACH APP CON  
124.6 317.4  
F45 CTAF  
123.075  
PBI D-ATIS  
123.75



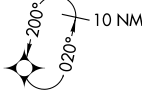
NOTE: Jet aircraft only.  
NOTE: Do not file CRANS, BISKI Transitions-  
To be assigned by ATC

NOTE: Chart not to scale.

(CONTINUED ON FOLLOWING PAGE)

See following page  
for arrival routes.

CLMNT  
11000 250K  
9000



BISKI TRANSITION (BISKI.CLMNT2)  
CRANS TRANSITION (CRANS.CLMNT2)  
DULEE TRANSITION (DULEE.CLMNT2)

SE-3, 28 NOV 2024 to 26 DEC 2024

SE-3, 28 NOV 2024 to 26 DEC 2024