

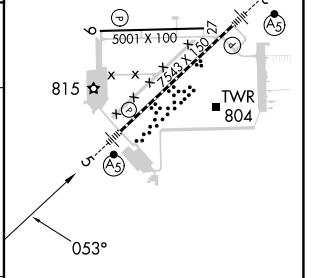
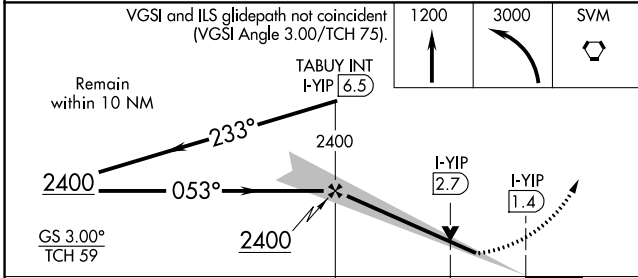
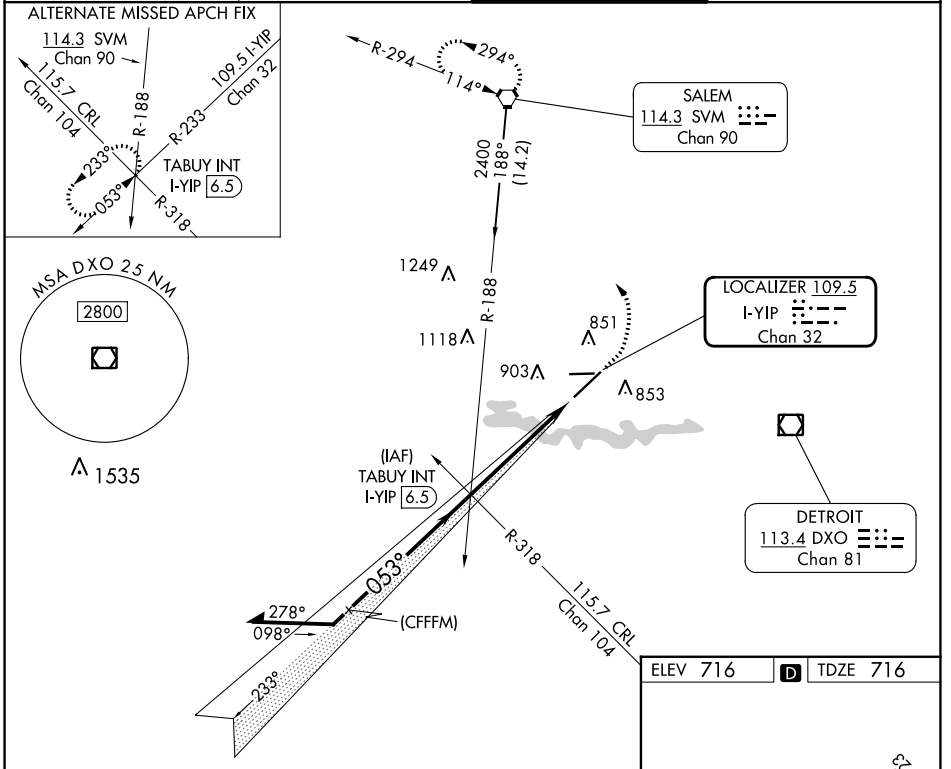
LOC/DME I-YIP <b>109.5</b> Chan <b>32</b>	APP CRS <b>053°</b>	Rwy Idg TDZE Apt Elev	<b>7543</b> <b>716</b> <b>716</b>
---	------------------------	-----------------------------	---

# ILS or LOC RWY 5

WILLOW RUN (YIP)

<p><b>▽</b> For inop ALS, increase S-LOC 5 <b>▲</b> Cats C/D visibility to 1<math>\frac{1}{2}</math> SM.</p>	<p>MALSR</p>	<p>MISSED APPROACH: Climb to 1200 then climbing left turn to 3000 direct SVM VORTAC and hold.</p>
--	--------------	---

ATIS <b>127.425</b>	DETROIT APP CON <b>118.95 284.0</b>	WILLOW RUN TOWER <b>125.275 256.9</b>	GND CON <b>119.975</b>
------------------------	--	--	---------------------------



	ELEV 716				D TDZE 716					
CATEGORY	A	B	C	D	FAF to MAP 5.1 NM					
S-ILS 5	916/18 200 (200-1/2)				60	90	120	150	180	
S-LOC 5	1200/24	484 (500-1/2)	1200/50	484 (500-1)	5:06	3:24	2:33	2:02	1:42	
CIRCLING	1220-1	504 (600-1)	1220-1 1/2	1400-2 1/4						
	504 (600-1 1/2) 684 (700-2 1/4)									

EC-1, 28 NOV 2024 to 26 DEC 2024

EC-1, 28 NOV 2024 to 26 DEC 2024