

(KAYLN3.KAYLN) 24137

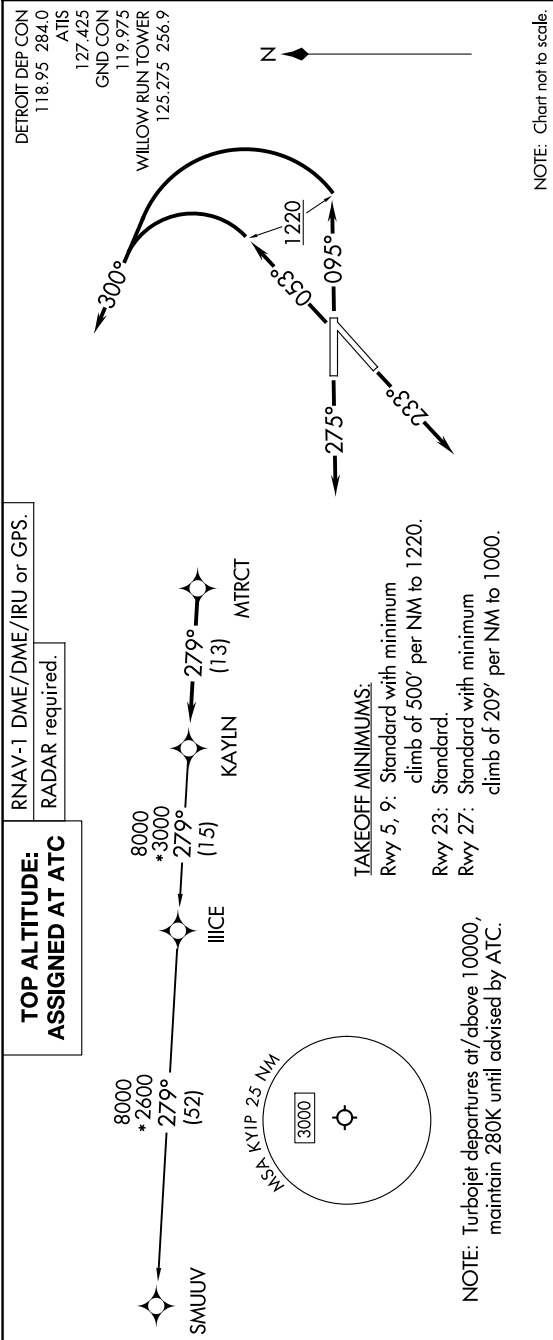
# KAYLN THREE DEPARTURE (RNAV)

AL-467 (FAA)

WILLOW RUN (YIP)

DETROIT, MICHIGAN

EC-1, 28 NOV 2024 to 26 DEC 2024



## DEPARTURE ROUTE DESCRIPTION

**TAKEOFF RUNWAY 5:** Climb on heading 053° to 1220, then on heading 300° or as assigned by ATC, for RADAR vectors to MTRCT, thence....

**TAKEOFF RUNWAY 9:** Climb on heading 095° to 1220, then on heading 300° or as assigned by ATC, for RADAR vectors to MTRCT, thence....

**TAKEOFF RUNWAY 23:** Climb on heading 233°, or as assigned by ATC, for RADAR vectors to MTRCT, thence....

**TAKEOFF RUNWAY 27:** Climb on heading 275°, or as assigned by ATC, for RADAR vectors to MTRCT, thence....

...on track 279° to KAYLN, then on (transition). Maintain ATC assigned altitude, expect filed altitude 10 minutes after departure.

SMUUV TRANSITION (KAYLN3.SMUUV):

# KAYLN THREE DEPARTURE (RNAV)

(KAYLN3.KAYLN) 16MAY24

DETROIT, MICHIGAN

WILLOW RUN (YIP)

EC-1, 28 NOV 2024 to 26 DEC 2024