

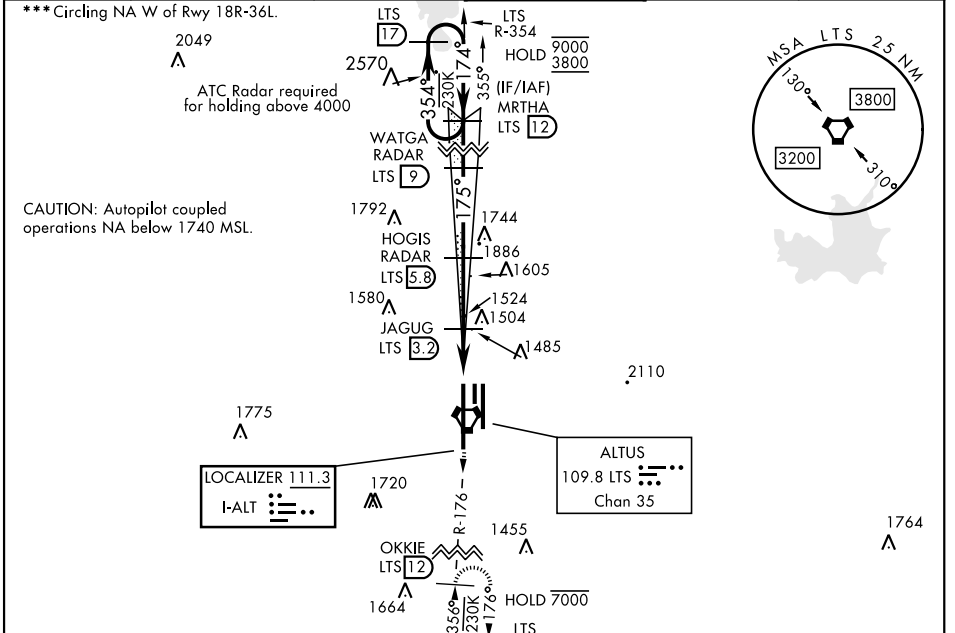
ALTUS, OKLAHOMA

# ILS Z or LOC RWY 18R

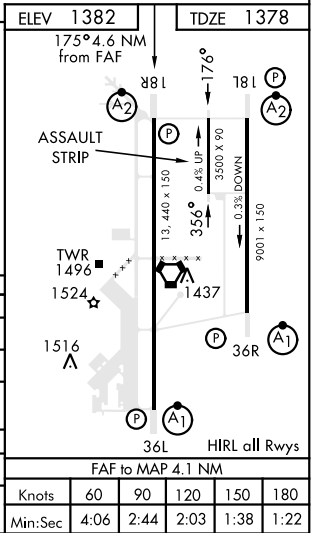
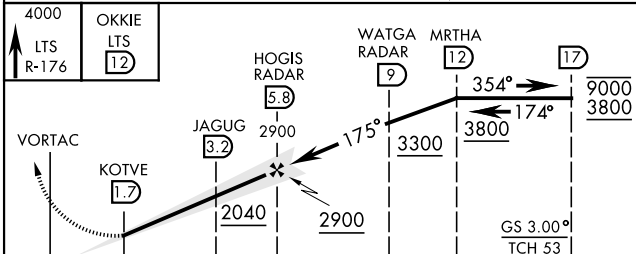
LOC I-ALT <b>111.3</b>	APCH CRS <b>175°</b>	Rwy Idg <b>13,440</b> TDZE <b>1378</b> Arprt Elev <b>1382</b>	AL-482 [USAF]	ALTUS AFB (KLTS)
---------------------------	-------------------------	---	---------------	------------------

DME or RADAR required.	SALSF <b>A2</b>	MISSED APPROACH: Climb to 4000, intercept LTS VORTAC R-176 to OKKIE and hold.
------------------------	--------------------	---

ATIS ★ <b>109.8 273.5</b>	FORT WORTH CENTER <b>133.5 350.35</b>	APP CON <b>125.1 353.7</b>	TOWER ★ <b>119.65 254.4</b>	GND CON <b>121.85 275.8</b>	CLNC DEL <b>120.65 284.7</b>
------------------------------	--	-------------------------------	--------------------------------	--------------------------------	---------------------------------



EMERG SAFE ALT 100 NM 4900



CATEGORY	A	B	C	D	E
S-ILS 18R	1578/40		200	(200-¾)	
S-LOC 18R*	1760/40	382 (400-¾)	1760/45	382	(400-¾)
*** CIRCLING	1780-1 398 (400-1)	1840-1 458 (500-1)	1880-1½ 498 (500-1½)	2080-2¼ 698 (700-2¼)	2180-2¾ 798 (800-2¾)
LOCAL ALTIMETER, WITHOUT LAST STEPDOWN FIX					
S-LOC 18R**	2040/40	662 (700-¾)	2040-1¾	662	(500-1¾)
*** CIRCLING	2040-1	658 (700-1)	2040-1¾	698 (700-2¼)	2180-2¾ 798 (800-2¾)

ALTUS, OKLAHOMA 34° 40' N-99° 16' W ALTUS AFB (KLTS)

Amdt 2 14JUL22

# ILS Z or LOC RWY 18R

SC-1, 28 NOV 2024 to 26 DEC 2024

SC-1, 28 NOV 2024 to 26 DEC 2024