

ALTUS, OKLAHOMA

RNAV (RNP) Y RWY 18L

APCH CRS	Rwy Idg	9001
175°	TDZE	1382
	Arprt Elev	1382

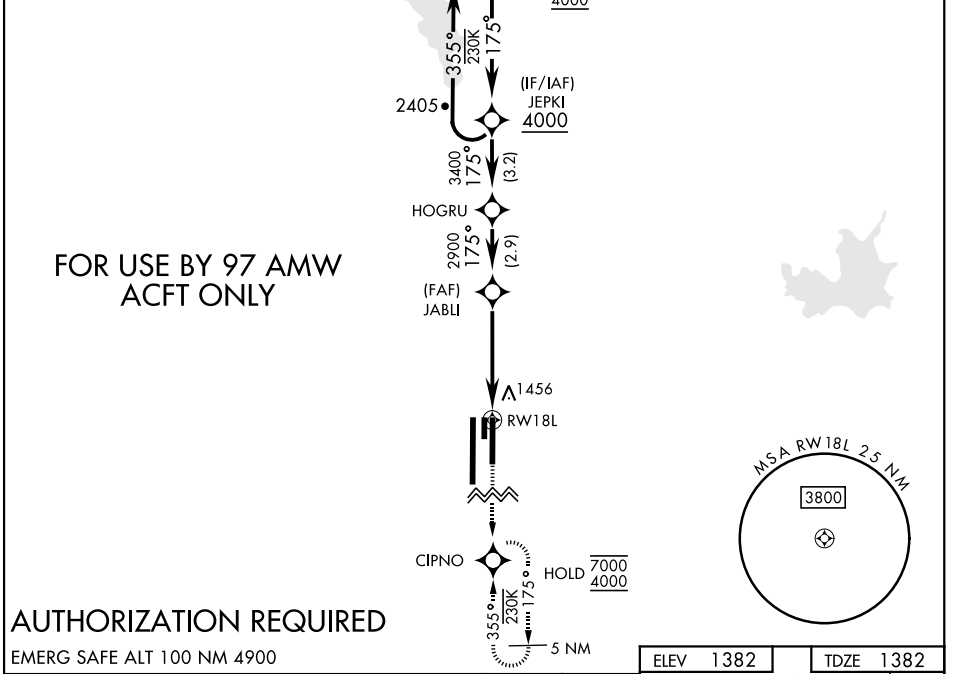
AL-482 [USAF]

ALTUS AFB (KLTS)

RNP AR APCH - GPS		SALSF	MISSED APPROACH: Climb to 4000 direct CIPNO and hold.
<p>▼*When ALS inop, increase RVR to 45, vis to 7/8 mile. **When ALS inop, increase RVR to 55, vis to 1 mile.</p>		(A2)	

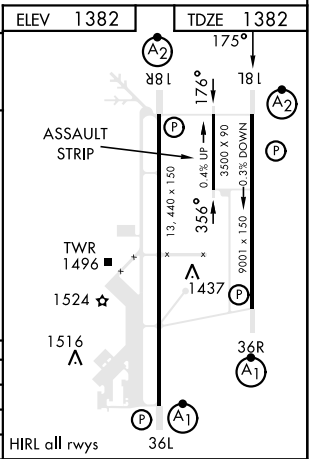
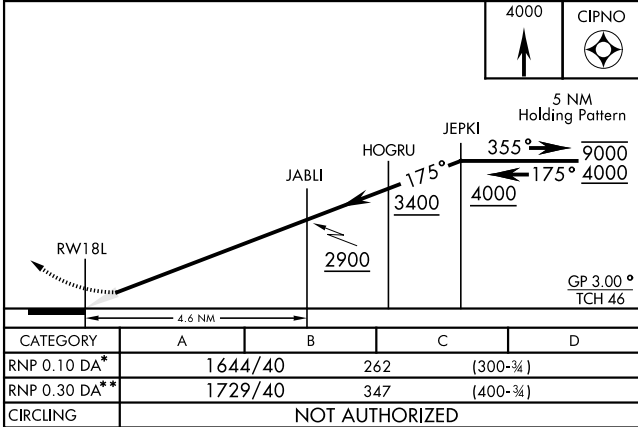
ATIS ★	FORT WORTH CENTER	APP CON	TOWER ★	GND CON	CLNC DEL
109.8 273.5	133.5 350.35	125.1 353.7	119.65 254.4	121.85 275.8	120.65 284.7

For uncompensated Baro-VNAV systems, procedure NA below -17°C (2°F) or above 54°C (130°F).



AUTHORIZATION REQUIRED

EMERG SAFE ALT 100 NM 4900



ALTUS, OKLAHOMA

34°40'N-99°16'W

ALTUS AFB (KLTS)

Amdt 2 10AUG23

RNAV (RNP) Y RWY 18L

SC-1, 28 NOV 2024 to 26 DEC 2024

SC-1, 28 NOV 2024 to 26 DEC 2024