

RNAV (RNP) Y RWY 36R

APCH CRS 355°	Rwy ldg TDZE Arprt Elev	9001 1361 1382
-------------------------	-------------------------------	---

AL-482 [USAF]

ALTUS AFB (KLTS)

RNP AR APCH

▼ * When ALS inop, increase RVR to 40, vis to 3/4 mile.
 ** When ALS inop, increase RVR to 45, vis to 7/8 mile.



MISSED APPROACH: Climb to 4000 direct JEPKI and hold.

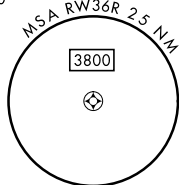
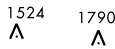
ATIS ★ 109.8 273.5	FORT WORTH CENTER 133.5 350.35	APP CON 125.1 353.7	TOWER ★ 119.65 254.4	GND CON 121.85 275.8	CLNC DEL 120.65 284.7
------------------------------	--	-------------------------------	--------------------------------	--------------------------------	---------------------------------

For uncompensated Baro-VNAV systems, procedure NA below -17°C (2°F) or above 54°C (130°F).

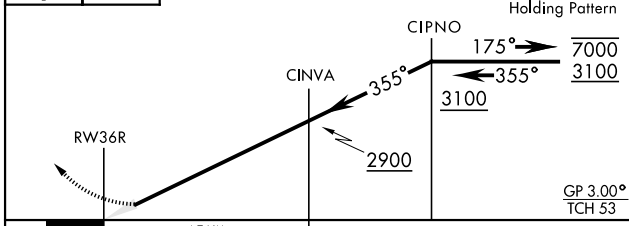
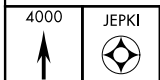
FOR USE BY 97 AMW ACFT ONLY



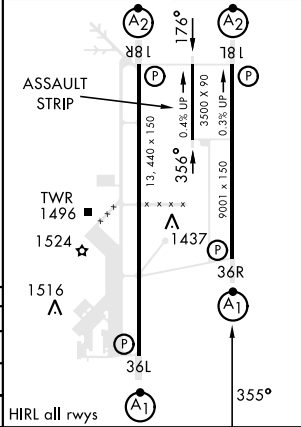
2083



AUTHORIZATION REQUIRED
EMERG SAFE ALT 100 NM 4900



ELEV 1382	TDZE 1361
-----------	-----------



CATEGORY	A	B	C	D
RNP 0.10 DA*	1611/24	250	(300-1/2)	
RNP 0.30 DA**	1672/24	311	(300-1/2)	
CIRCLING	NOT AUTHORIZED			

RNAV (RNP) Y RWY 36R

SC-1, 28 NOV 2024 TO 26 DEC 2024

SC-1, 28 NOV 2024 TO 26 DEC 2024