

ALTUS, OKLAHOMA

RNAV (GPS) Z RWY 18L

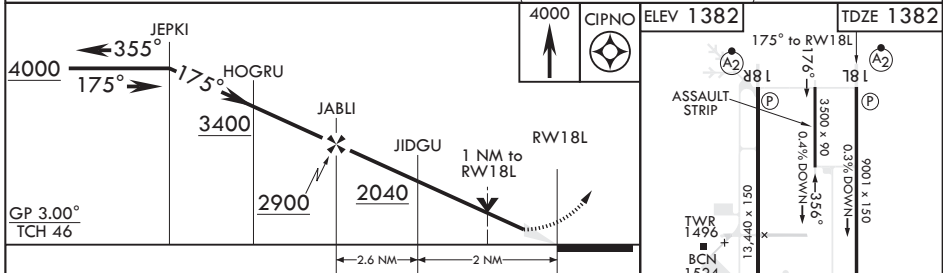
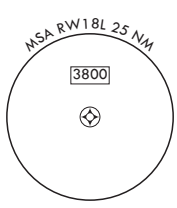
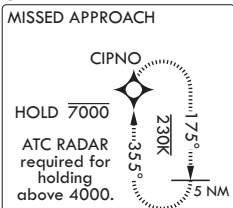
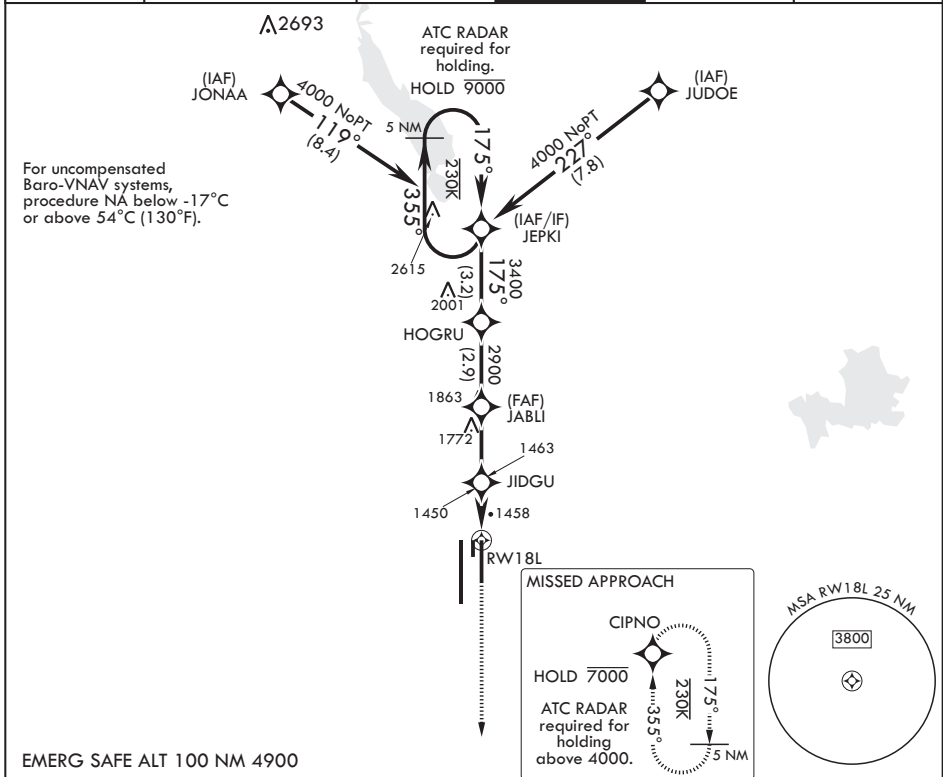
APCH CRS	Rwy Idg	9001
175°	TDZE	1382
	Arprt Elev	1382

AL-482 (USAF)

ALTUS AFB (KLTS)

RNP APCH. DME/DME RNP-0.3 NA	SALS	MISSED APPROACH: Climb to 4000 direct CIPNO and hold.
<p>▼ * When ALS inop, increase RVR to 55, vis to 1 mile. ** Circling NA W of Rwy 18R-36L.</p>		

ATIS★	FORT WORTH CENTER	APP CON	TOWER★	GND CON	CLNC DEL
109.8 273.5	133.5 350.35	125.1 353.7	119.65 254.4	121.85 275.8	120.65 284.7



CATEGORY	A	B	C	D	E
LNAV/VNAV DA	1632/40		250	(300-¾)	
LNAV MDA*	1760/40		378	(400-¾)	
CIRCLING**	1780-1	1840-1	1880-1½	2080-2¼	2180-2¾
	398 (400-1)	458 (500-1)	498 (500-1½)	698 (700-2¼)	798 (800-2¾)

ALTUS, OKLAHOMA

34°40'N - 99°16'W

ALTUS AFB (KLTS)

Amdt 3 14JUL22
TERPS

RNAV (GPS) Z RWY 18L

SC-1, 28 NOV 2024 to 26 DEC 2024

SC-1, 28 NOV 2024 to 26 DEC 2024