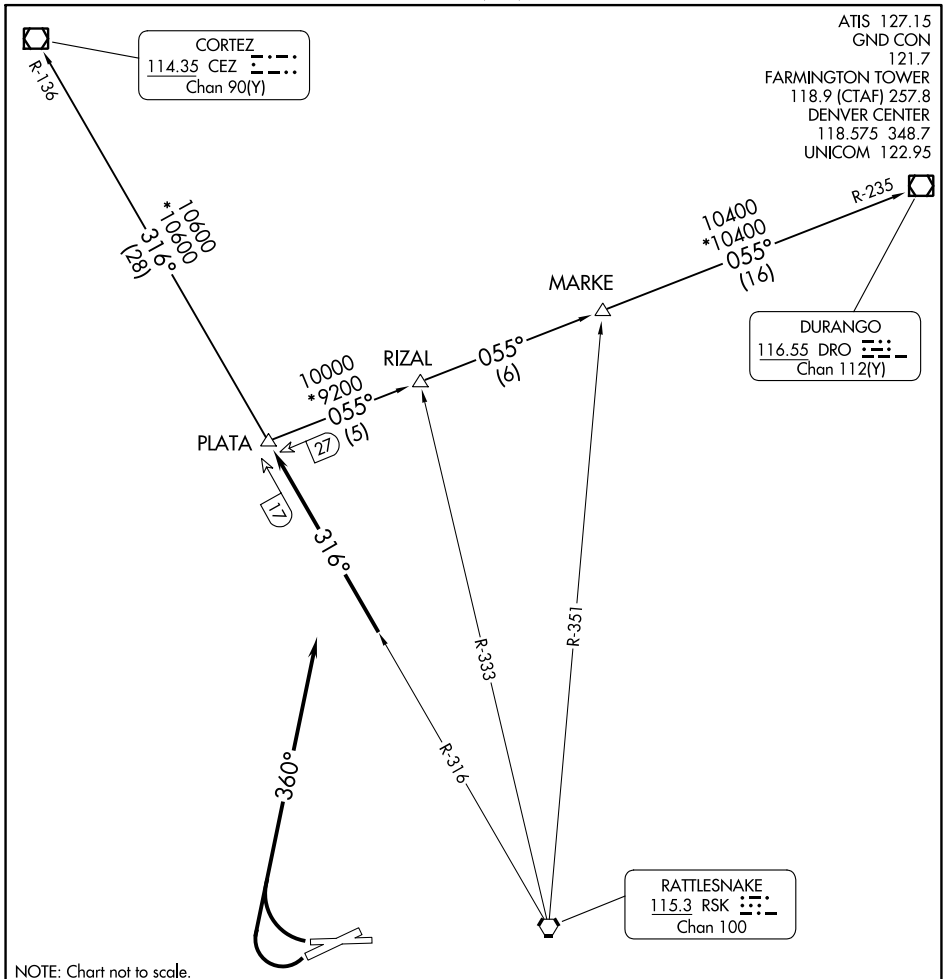


(PLATA1.PLATA) 23334

# PLATA ONE DEPARTURE

AL-493 (FAA)

FOUR CORNERS RGNL (F<sup>M</sup>N)  
FARMINGTON, NEW MEXICO



ATIS 127.15  
 GND CON 121.7  
 FARMINGTON TOWER 118.9 (CTAF) 257.8  
 DENVER CENTER 118.575 348.7  
 UNICOM 122.95

CORTEZ  
 114.35 CEZ   
 Chan 90(Y)

DURANGO  
 116.55 DRO   
 Chan 112(Y)

RATTLESNAKE  
 115.3 RSK   
 Chan 100

SW-1, 28 NOV 2024 to 26 DEC 2024

SW-1, 28 NOV 2024 to 26 DEC 2024



## DEPARTURE ROUTE DESCRIPTION

Aircraft departure Runways 23 and 25 turn right heading 360° to intercept RSK R-316 to PLATA INT. Thence via (transition) or (assigned route).

CORTEZ TRANSITION (PLATA1.CEZ): From over PLATA INT via RSK R-316 and CEZ R-136 to CEZ VOR/DME.

DURANGO TRANSITION (PLATA1.DRO): From over PLATA INT via DRO R-235 to DRO VOR/DME.

MARKE TRANSITION (PLATA1.MARKE): From over PLATA INT via DRO R-235 to MARKE INT.

RIZAL TRANSITION (PLATA1.RIZAL): From over PLATA INT via DRO R-235 to RIZAL INT.

# PLATA ONE DEPARTURE

(PLATA1.PLATA) 05DEC96

FARMINGTON, NEW MEXICO  
FOUR CORNERS RGNL (F<sup>M</sup>N)