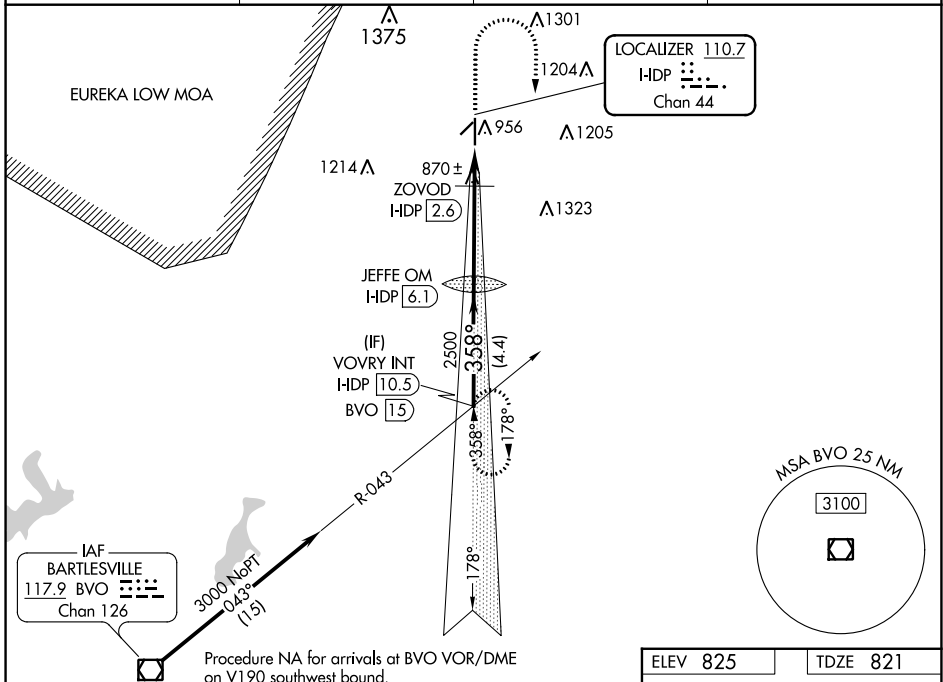


LOC/DME HDP <b>110.7</b> Chan <b>44</b>	APP CRS <b>358°</b>	Rwy Idg <b>5501</b> TDZE <b>821</b> Apt Elev <b>825</b>
-----------------------------------------------	------------------------	---------------------------------------------------------------

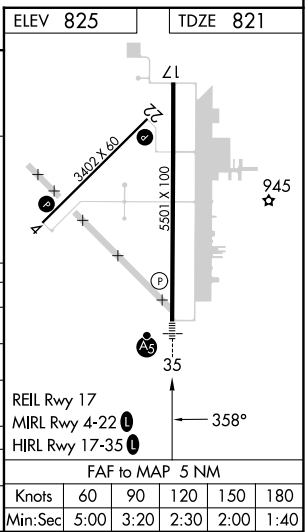
# ILS or LOC RWY 35

INDEPENDENCE MUNI (IDP)

<b>NA</b> Circling Rwy 4, 22 NA at night.	MALSRR	MISSED APPROACH: Climb to 1500 then climbing right turn to 3000 on heading 179° to intercept BVO VOR/DME R-043 to VOVRY INT and hold.	
AWOS-3PT <b>118.525</b>	KANSAS CITY CENTER <b>128.6 282.325</b>	CLNC DEL <b>121.65</b>	UNICOM <b>123.05</b> (CTAF) <b>0</b>



VOVRY INT HDP 10.5 BVO 15	JEFFE OM HDP 6.1	ZOVOD HDP 2.6	BVO R-043	VOVRY INT
3000	2461	2500	1340	1340
GS 3.00° TCH 42	358°	178°	178°	178°
4.4 NM	3.5 NM	0.7 NM	0.8 NM	
CATEGORY	A	B	C	D
S-ILS 35	1021-½		200 (200-½)	
S-LOC 35	1340-½ 519 (600-½)		1340-1 519 (600-1)	
<b>C</b> CIRCLING	1340-1 515 (600-1)		1340-1½ 515 (600-1½) 1680-2¾ 855 (900-2¾)	
ZOVOD FIX MINIMUMS				
S-LOC 35	1120-½ 299 (300-½)			
<b>C</b> CIRCLING	1280-1 455 (500-1)		1340-1½ 515 (600-1½) 1680-2¾ 855 (900-2¾)	



NC-2, 28 NOV 2024 to 26 DEC 2024

NC-2, 28 NOV 2024 to 26 DEC 2024